



2022 Annual Meeting

December 7, 2022

Today's Presenters



Dave Henner, DO

President, Board of Directors

Derek Forfang

Co-Chairs, Kidney Patient Advisory Council (KPAC)

Vicky Cash, MBA, BSN, RN

Chair, Executive Director Advisory Council (EDAC)

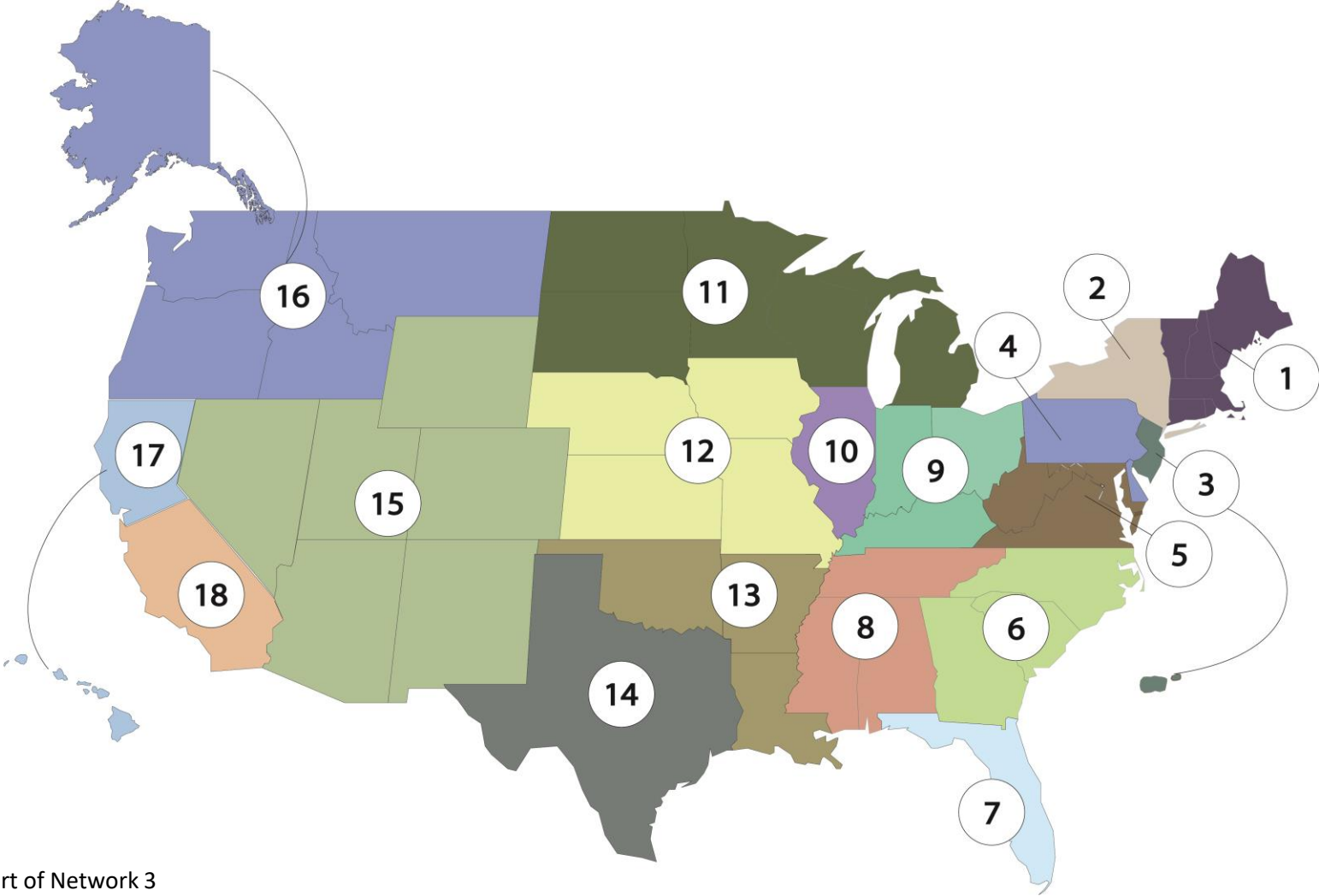
Dan Landry, DO, FASN

Chair, Medical Advisory Council (MAC)

Stephanie Hutchinson, MBA

Treasurer

ESRD Networks



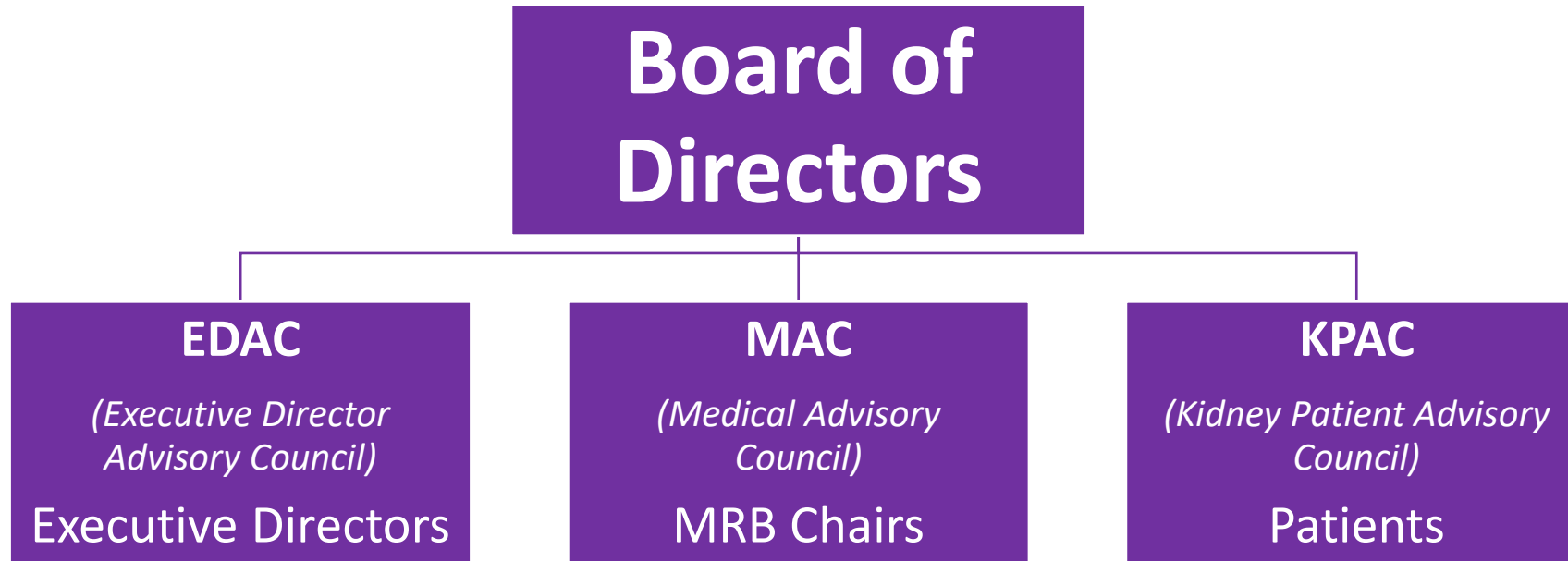
Puerto Rico and Virgin Islands are part of Network 3
Hawaii, Guam, American Samoa are part of Network 17

All ESRD Networks are members of the Forum of ESRD Networks, which is a not-for-profit organization that advocates on behalf of its membership and coordinates projects and activities of mutual interest to ESRD Networks. The Forum facilitates the flow of information and advances a national quality agenda with CMS and other renal organizations.

The **MISSION** of the Forum is to support and advocate on behalf of the ESRD Networks in promoting methods to improve the quality of care to patients with renal disease.

CORE VALUES:

- Volunteerism
- Collaboration
- Innovation and Flexibility
- Spread of Knowledge
- Integrity
- Autonomy of Individual ESRD Networks
- Person (Patient & Family) Centeredness



- Assisting the Networks
- Council Activities: MAC, EDAC KPAC
- Regular Communication with CMS
- Quality Conference Webinars
- Facilitate flow of information between the Forum and Network Staff/BOD/MRB/PAC
- Relationships with other Stakeholders (i.e., RHA, RPA, LDOs, NKF, AAKP, AHQA, CDC, ASN)

Executive Committee:

President: David Henner, DO

President-Elect: Kam Kalantar-Zadeh, MD, MPH, PhD

Past President: Ralph Atkinson III, MD

Treasurer: Stephanie Hutchinson, MBA

Secretary: Chris Brown

MAC Chair: Dan Landry, DO, FASN

MAC Vice-Chair: Preethi Yerram, MD, MS, FASN

EDAC Chair: Vicky Cash, MBA, BSN, RN

EDAC Vice-Chair: Mary Albin, BS, CPHQ

KPAC Co-Chair: Derek Forfang

KPAC Co-Chair: Dawn Edwards

Members-at-Large:

Christine Logar, MD, FASN

Kelly M. Mayo, MS

Keith Norris, MD PhD

Stephen Pastan, MD

Maria Regnier, MSN, RN, CNN

Preethi Yerram, MD, MS, FASN

Ad Hoc:

Andrew Howard, MD, FACP

Donald Molony, MD

John Wagner, MD, MBA

Emeritus:

Louis Diamond, MB, ChB, FACP, FCP (SA)

MARIA REGNIER, MSN, RN, CNN

- Senior Director of Dialysis Services at Sanford Health System, overseeing 17 outpatient dialysis clinics, 7 home dialysis programs, and 6 inpatient dialysis programs
- Extensive experience setting up new dialysis programs and adding additional programming to current programs. (i.e., home hemodialysis, pediatric dialysis, dens in long-term care facilities, apheresis)
- Masters in Nursing Administration from the University of Mary in Bismarck, ND
- Serves on the Renal Healthcare Administrators Board of Directors
- Served on the Midwest Kidney Network Medical Review Committee for four years

VICKY CASH, MBA, BSN, RN (Chair)

- Executive Director of ESRD Network 9
- Quality Improvement subject matter expert across the IPRO ESRD Program (Networks 1, 2, 6 and 9)
- Master of Business Administration in Healthcare Management, University of Phoenix
- Bachelor of Science in Nursing, Ursuline College

MARY ALBIN, BS, CPHQ (Vice Chair)

- Executive Director of ESRD Networks 8 and 14
- 30 years of healthcare experience with special emphasis on ESRD
- Appointed as a commissioned member of the Chronic Kidney Disease Task Force in 2020 by the Governor of Texas
- Bachelor of Science in Organizational Leadership, Chapman University

Chair:	Vicky Cash, MBA, BSN, RN
Vice-Chair:	Mary Albin, BS, CPHQ
Networks 1/2	Sue Caponi, MBA, RN, BSN, CPHQ
Networks 3/4	Chris Brown
Network 5	Brandy Vinson
Network 6	Danielle Daley, MBA
Networks 7/13/15/17/18	Helen Rose, MSW, BSW, LCSW
Networks 8/14	Mary Albin, BS, CPHQ
Network 9	Victoria L. Cash, MBA, BSN, RN
Network 10	Audrey Broaddus
Network 11	Dee LeDuc
Network 12	Stephanie L. Smith
Network 16	Stephanie Hutchinson, MBA

Welcome New MAC Chair & Vice Chair!



DANIEL L. LANDRY, DO, FASN (Chair)

- Chief of the Division of Nephrology as well as the Director of Acute Inpatient Dialysis and Critical Care Nephrology at Baystate Medical Center
- Medical director for the in-center and home dialysis unit at FKC East Springfield
- Attended The College of the Holy Cross for undergraduate education and medical school at the University of New England College of Osteopathic Medicine; trained in internal medicine at the Naval Medical Center in Portsmouth, Virginia
- Served seven years in the U.S. Navy
- Recognized for his excellence in teaching in Baystate's nephrology fellowship program

PREETHI YERRAM, MD, MS, FASN (Vice Chair)

- Associate Professor of Medicine, Division of Nephrology, University of Missouri Columbia
- Medical director for outpatient home dialysis and transitional care units, as well as an acute dialysis program
- Lead facilitator for the HUB Team of Missouri's telehealth network's ECHO project

Chair: Daniel L. Landry, DO, FASN

Vice Chair: Preethi Yerram, MD, MS, FASN

Immediate Past Chair: Kam Kalantar-Zadeh, MD, MPA, PhD

Network 1: Daniel L. Landry, DO, FASN

Network 2: George Coritsidis, MD

Network 3: Keith Norris, MD, PhD

Network 4: Paul Palevsky, MD

Network 5: Marc Brazie, MD

Network 6: John J. Doran, MD, FASN

Network 7: Debra Hain, PhD, APRN, AGPCNP-BC

Network 8: Martha Tankersley, MSN, RN

Network 9: Anne Huml, MD, MS

Network 10: Andres Serrano, MD

Network 11: Louis Raymond, MD

Network 12: Preethi Yerram, MD, MS, FASN

Network 13: Laura Rankin, MD

Network 14: Donald Molony, MD

Network 15: Harmeet Singh, MD

Network 16: John Stivelman, MD

Network 16 Alt: Christine Logar, MD

Network 17: Ramin Sam, MD

Network 18: Kam Kalantar-Zadeh, MD, MPH, PhD

Ad Hoc Member: Stephen Pastan, MD

EDAC Rep: Sue Caponi, MBA, RN, BSN, CPHQ
(1/2)

QID Rep: Barbara Dommert-Breckler, RN,
BSN, CNN (16)

KPAC Rep: Derek Forfang (17)

Network 1: Jerry Calabritto

Network 2: Stephanie Dixon

Dawn Edwards (**Co-Chair**)

Network 3: Bill Senior

Joy Solomon

Network 4: Timmy Nelson

Network 5: Virna Elly

Patrick Gee

Network 6: Dolores McGrath

Network 7: Janice Starling

Network 8: Jacqueline Bland

Terry Peeler

Network 9: Evan Coaker

Network 10: Quin Taylor

Network 11: Jeff Nelson

Patricia Bologna

Mary Baliker

Network 12: Shane Blanchard

Network 13: Bobby Walker

Network 14: Precious McCowan

Dawn Goertz

Network 15: Lynne Hall

Network 16: Bob Crabtree

Lisa Custer

Network 17: Derek Forfang (**Co-Chair**)

Doris Lew

Network 18: Terry McCallum

EDAC Rep: Dee LeDuc (NW 11)

PSD Reps: Yessi Cubillo (NW 3)

Lisa Hall, MSSW, LICSW (NW 16)

Strategic Planning Priorities were updated in September 2022:

- Strategic Partnerships
- Board Development
- Customer Outreach, Sharing, & Engagement (focus on social media)
- Resource Identification

Forum Leadership Calls & Meetings



Forum Executive Committee:

- Monthly conference calls

Forum Board of Directors:

- Quarterly conference calls
- 2022 Meetings: March 9 & 11 (virtual), September 9-10 (Chicago)

CMS/Forum Leadership Calls

- Conference calls
- In-Person Meeting at CMS Quality Conference *(2020, no in-person meeting in 2021 or 2022)*

CMS/Network/Forum COVID-19 Calls

- Weekly calls began April 2020, transitioned to monthly in November 2020, ended May 2021, monthly calls resumed August 2021, bi-monthly calls began February 2022

MAC

- Quarterly conference calls
- Annual MAC Meeting: November 2, 2022 (Orlando)

EDAC

- Monthly conference calls
- Meeting with CMS & Division of Kidney Health/iQIIG Leaders
- Periodic calls with FMC, DaVita, DCI, RHA

KPAC

- Monthly conference calls

CMS Organizational Chart

Chiquita Brooks-LaSure,
Administrator, CMS

Liz Fowler
Director, Center for
Medicare and Medicaid
Innovation

iQuality Improvement & Innovation Group

Anita Monteiro, Director

Shane Illies, Act. Dep. Dir.

Shalon Quinn, PhD

Vacant, CMS Chief Medical Officer for Quality
Improvement

Div of Community & Population Health

Traci Archibald, Dir
Sophia Autrey, Dep.
Dir

Craig Bagley, Acting
Regional Program
Mgr

(Permanent RPM –
Shalon Quinn)

Div of Beneficiary Review & Care Mgmt

Steven Rubio, Dir.

Confidence
Gbarayor-Hyde, Dep.
Dir.

Trevor Stone, Acting
Regional Program
Mgr.

Div of Strategic Innovation, Evaluation & Communication

Renee Dupee, Dir
(vacant), Dep. Dir.
(vacant), Regional
Program Mgr

Div of Quality Improvement Innovation Models Testing

Jade Perdue, Dir.
Brenda Gentles, Dep
Dir.

Div of Transforming Clinical Practices

Rob Flemming, Dir
Shawan Johnson,
Dep. Dir

Division of Kidney Health

Melissa Dorsey,
Acting Dir
Mitzi Christ, Regional
Program Mgr

CMS Org Chart:

https://www.cms.gov/About-CMS/Agency-Information/CMSLeadership/Office_CCSQ.html

Regularly scheduled calls to discuss programmatic/strategic issues:

- **Anita Monteiro**, Director, iQuality Improvement & Innovation Group (iQIIG)
- **Shane Illies**, Deputy Director, iQIIG
- **Vacant**, CMS Chief Medical Officer for Quality Improvement
- **Shalon Quinn**, Director, Division of Kidney Health, iQIIG
- **Melissa Dorsey**, Deputy Director, Division of Kidney Health, iQIIG (**Acting Director, effective 12/4/2022**)
- **Mitzi Christ**, Regional Program Manager, Div of Kidney Health, iQIIG
- CORs, ARAs, Central Office staff

2022 Calls: 1/10, 2/14, 4/25, 6/13, 8/15, 10/17, 12/12

- Dr. John J. Sim shared findings from the Kaiser Permanente data system pertaining to COVID infections in the kidney CKD and ESRD populations.
- Dr. Jeffrey Perl, Dr. Ronald Pisoni, and Lauren Kane presented an overview of the Optimizing Prevention of PD-Associate Peritonitis in the US (OPPUS) project.
- Presentation from CDC (P. Patel & A.C. Bardossy) re: new recommendations for COVID-19 vaccine boosters; questions sent to CDC via CMS re: COVID vaccination guidelines were addressed by CDC leaders.
- Bridget Pfaff and Megan Meller from Gunderson Health presented findings and lessons learned from their study “SARS-CoV-2 in ESRD Facilities: Infection Control and Immunization.”
- The Forum Executive Committee submitted a letter to CMS re: Network hospitalization goals and diagnostic codes. CMS met with members of the Executive Committee in August to seek further clarification on the comments, which are being taken under advisement.
- Stephen Preston, PhD, MPH, led a discussion on the increase in involuntary discharges and requested the Forum’s assistance in addressing this issue.
- Stephanie Hutchinson shared Network 16’s success with the Home Dialysis ECHO project.

- Forum leadership continued to bring COVID priorities and concerns to CMS during monthly CMS/Forum leadership calls. Forum leaders provided updates on:
 - Rates of COVID testing for kidney patients
 - COVID positivity rates among kidney patients
 - Vaccination rates among kidney patients and dialysis staff
 - Kidney transplant and waitlist rates
 - Network observations on COVID-related technical assistance
 - Kidney patient observations
 - **Dialysis supply & staffing shortages**

Minutes, recordings, resources: <https://esrdnetworks.org/resources-news/covid-19-information-resources>

What Else Has the Forum Been Doing?



- Drafted several letters in response to community concerns and proposed rules (see next slides)
- New resources available to Forum members and the kidney community (see next slides)
- Forum Members in the Community highlight Forum activities (see next slides)
- Finance Committee: monitoring Forum investments, identifying additional funding sources, strong financials continue through 2022
- Updates to MAC Toolkits
- New KPAC Toolkits
- Sharing Highly Effective Practices in the Kidney Community; consider submitting a best practice to the Forum's new community education resource. Available at:

<https://esrdnetworks.org/education/sharing-highly-effective-practices-in-the-kidney-community/>

What Else Has the Forum Been Doing?



- The Forum received a \$5000 grant from PCORI to support the dissemination of Evidence Updates related to treating depression in patients with kidney disease. The Forum will complete 3 activities to help promote the PCORI Evidence Updates:
 1. Patient-perspective piece summarizing KPAC members' participation in study and their experiences related to mental health and kidney disease.
 2. Podcast on the topic of mental health in dialysis patients to bring awareness to the topic and offer resources for patients, including the PCORI Evidence Updates and the KPAC Depression Toolkit.
 3. Partnering with the ESRD Networks, the KPAC will host a community webinar on January 5, 2023, on the topic of mental health in dialysis patients, annual depression screening, and treatment options.

- NQF re: several measures evaluated by the Renal Standing Committee (Sep 2022)
- CMS re: CMS-1770-P: Proposals and Request for Information on Medicare Parts A and B Payment for Dental Services, specifically re: coverage for CKD/ESRD patients (Sep 2022)
- CMS re: CMS-1768-P: Medicare ESRD PPS Proposed Rule (Aug 2022)
- UM-KECC re: Spring 2022 Kidney Practitioner-Level Measures (Mar 2022)
- CMS re: CMS-3409-NC Transplant Programs/OPO/ESRD Facilities (Feb 2022)
- CMS re: RFI: Health and Safety Requirements for Transplant Programs, Organ Procurement Organizations, and End-State Renal Disease Facilities (Feb 2022)

Comments available for review at <https://esrdnetworks.org/resources-news/forum-position-papers-public-comments/>

New Resources Available on the Forum Website



- COVID-19 Patient Fact Sheet, including Bivalent Booster Information, English and Spanish (Oct 2022)
https://media.esrdnetworks.org/documents/Facts_about_Bivalent_COVID_Vaccine_for_Hemodialysis_Patients_Final3.pdf
https://media.esrdnetworks.org/documents/Facts_about_Bivalent_COVID_Vaccine_for_Hemodialysis_Patients_Final3_Spanish.pdf
- MAC Updates to Transitions of Care Toolkit (Mar 2022)
<https://esrdnetworks.org/toolkits/professional-toolkits/transitions-of-care-toolkit/>
- COVID Booster Superhero Poster, English and Spanish (Feb 2022)
<https://esrdnetworks.org/resources-news/covid-19-information-resources/resources-for-kidney-patients/>
- National ESRD Census Data - updated quarterly
<https://esrdnetworks.org/resources-news/national-esrd-census-data/>

- D. Edwards, D. Forfang, K. Kalantar, D. Henner: NCC Expert Team-Transitions of Care-highlighted Forum TOC Toolkit (February 2022)
- K. Kalantar, D. Molony, M. Albin, N. Avery, D. Forfang, D. Edwards, B. Bowman, C. Brown, A. Howard, D. Henner: Medical Director Workshop. RPA Annual Meeting, Dallas, TX (March 2022)
- A. Howard: New Payment Models: KCC. RPA Annual Meeting, Dallas, TX (March 2022)
- D. Forfang, D. Edwards, K. Kalantar-Zadeh. The impact of phosphorus management today on quality of life: Patient perspectives. *Kidney Med.* 2022;4(4):1-5. [https://www.kidneymedicinejournal.org/article/S2590-0595\(22\)00044-9/fulltext](https://www.kidneymedicinejournal.org/article/S2590-0595(22)00044-9/fulltext)
- T. Nelson. New Hope, New Health: Charting a Path Forward from a Patient Perspective. CMS Quality Conference, Virtual (April 2022)
- D. Edwards. Symptom-Based Complications in Dialysis. KDIGO Controversies Conference, Berlin, Germany (April 2022)
- M. Baliker. Challenges in Management of the Kidney Allograft: From Decline to Failure. KDIGO Controversies Conference, Berlin, Germany (April 2022)
- D. Henner. [Transitional Care Units](#). NKF Spring Clinicals, Boston, MA (April 2022)
- P. Gee, V. Elly. Patient Engagement and Kidney Care. NKF Spring Clinicals, Boston, MA (April 2022)
- P. Gee, V. Elly, L. Custer. Health Equity Listening and Learning Panel. NKF Spring Clinicals, Boston, MA (April 2022)
- D. Edwards. Debunking Common Myths about Patient Eligibility for Home Dialysis. NKF Spring Clinicals, Boston, MA (April 2022)

Forum Members in the Community



- Dan Landry, MD, NKF New England Excellence in Nephrology Award 2022 (April 2022)
- K. Kalantar-Zadeh et al. e-Poster. Palliative Care Utilization Among Advanced CKD Patients Treated with Conservative Management vs. Dialysis. NKF Spring Clinicals, Boston, MA (April 2022)
- K. Kalantar-Zadeh et al. e-Poster. Racial Disparities in Involuntary Discharges from Dialysis Facilities and Related Patient-Reported Grievances throughout the Nation: Data from 24,718 Affected Dialysis Patients during 2017-2020. NKF Spring Clinicals, Boston, MA (April 2022)
- D. Henner. Creating Partnerships: The Role of the Medical Director in the Dialysis Facility. Renal Healthcare Association Dialysis Facility Operations 101 Back to Basics, Virtual (May 2022)
- M. Baliker. Kidney Transplant: Navigating the Waitlist (Panel). American Kidney Fund Kidney Action Week (June 2022)
- M. Baliker. Organ and Tissue Donation: A Heroic Decision. University of Wisconsin LaCrosse Alumni (June 2022)
- Brandy Vinson appointed as Forum representative to the National Living Donor Assistance Center Advisory Group (July 2022)
- M. Baliker. Worked with Chronic Disease Coalition and Wisconsin Governor Tony Evers on Proclamation for July 10, 2022, as Chronic Disease Day. (July 2022)
- D. Edwards, D. Lew. IDEAS Conference, Seattle, WA (August 2022)
- D. Forfang, L. Custer, J. Starling, D. Henner. Best Practices: Home Programs, Transitional Dialysis. 2022 Visonex User Group Meeting, Green Bay, WI (August 2022)
- D. Edwards. Exploring Opportunities to Join Home Dialysis Programs. BONENT 2022 Northeast Seminar. (September 2022)
- D. Edwards, D. Forfang. KDOQI Guidelines Scientific Workshop. National Kidney Foundation. Washington, DC. (September 2022)
- D. Edwards. Itching (Pruritus) and Chronic Kidney Disease: A Doctor Patient Discussion. National Kidney Foundation Live Event. (September 2022)

- M. Baliker. Patient Perspective on Xenotransplantation. *Kidney 360*. 2022;3(11):1953-1954. (October 2022)
- D. Edwards. Living Your Best Life with Kidney Disease Patient Education Event. (October 2022)
- D. Goertz. Bridging the Gap: Developing Resources for Patients by Patients. 2022 National Patient and Family Member Engagement Learning and Action Network (NPFE-LAN) Summit. (October 2022)
- K. Kalantar-Zadeh. A Look in the Crystal Ball: COVID-19 and the Future of Outpatient Dialysis – ESRD Network Roles: Patient Resources and Regulatory. ASN Kidney Week, Orlando, FL. (November 2022)
- D. Edwards. A Look in the Crystal Ball: COVID-19 and the Future of Outpatient Dialysis – Most Important Good and Bad Impacts of COVID in Dialysis. ASN Kidney Week, Orlando, FL. (November 2022)
- D. Edwards. Life participation: When there is more to life than dialysis. *Peritoneal Dialysis International*. 2022;42(6):552-553. (November 2022)
- D. Edwards, K. Kalantar-Zadeh, K. Norris, D. Molony, et al. Practicing health equity in involuntary discharges to overcome disparities in dialysis and kidney patient care. *Current Opinion in Nephrology and Hypertension*. 2022;31(). (December 2022)



KPAC Report

Derek Forfang
Co-Chair, KPAC
ESRD Network 17

Mission:

To support and advocate on behalf of the ESRD Networks and to improve the quality of care to patients with renal disease.

Vision:

Being the patient eyes, ears and voice for CMS bridging the gap between patient experience and provider performance.

March 2015

Network 1: Jerry Calabritto

Network 2: Stephanie Dixon

Dawn Edwards **(Co-Chair)**

Network 3: Bill Senior

Joy Solomon

Network 4: Timmy Nelson

Network 5: Virna Elly

Patrick Gee

Network 6: Dolores McGrath

Network 7: Janice Starling

Network 8: Jacqueline Bland

Terry Peeler

Network 9: Evan Coaker

Network 10: Quin Taylor

Network 11: Jeff Nelson

Patricia Bologna

Mary Baliker

Network 12: Shane Blanchard

Network 13: Bobby Walker

Network 14: Precious McCowan

Dawn Goertz

Network 15: Lynne Hall

Network 16: Bob Crabtree

Lisa Custer

Network 17: Derek Forfang **(Co-Chair)**

Doris Lew

Network 18: Terry McCallum

EDAC Rep: Dee LeDuc (NW 11)

PSD Reps: Yessi Cubillo (NW 3)

Lisa Hall, MSSW, LICSW (NW 16)

Welcome New KPAC Members!



BOB CRABTREE

- ESRD Network 16
- Transplant recipient
- Executive Director, The Road Back to Life (<https://www.kidneysupportgroup.org/>)

JOY SOLOMON, MSN, RN, PNP

- ESRD Network 3
- Home hemodialysis patient
- Nurse practitioner and registered nurse

BOBBY WALKER

- ESRD Network 13
- Transplant recipient

- Update KPAC Business Plan
- Top Priorities Include:
 - Develop a Toolkit on Health Equity
 - Develop a Toolkit about Cardiovascular Disease & CKD
 - Develop short videos/webinars about KPAC resources and orientation materials for new KPAC members
 - Explore financial resources to help support the Forum donations

- NKF Policy and member participation
- AAKP Board and member participation
- DPC Board member
- UNOS
- Philadelphia OPO Board
- UCSF Kidney Project Patient Board
- New York State CKD Champions
- ASN: Kidney Health Initiative & Kidney X Reviewers, DKD Diabetic Kidney Disease Collaborative
- CDC: Making Dialysis Safer Coalition
- KCER
- ESRD NCC/MEI, NEPOP
- Forum MAC

- SONG, PD Expert Working Groups for Technique Survival, Infection, and Life Participation, HD CVD MI Expert Working group
- OPPUS aspects of peritonitis-related practices and outcomes
- PDOPPS Webinar OPPUS dashboard update, STATUS OF PD in the US
- NIH / NIDDK Advisory Board
- Docola <https://www.doco.la/#/Home>
- PCORI Grants: Shared Decision Making and Depression
- NCC Legacy Members
- TAQIL ETCLC – Timmy & Maria
- KDIGO Workgroups – Dawn & Mary
- HDU (Home Dialyzors United) Board Members - Dawn & Patrick

- Speaking Engagements
 - RPA Annual Meeting
 - CMS Quality Conference
 - NKF Spring Clinicals
 - KDIGO Controversies Conference
 - KDOQI Guidelines Scientific Workshop
 - American Kidney Fund Kidney Action Week
 - University of Wisconsin
 - ASN Kidney Week
 - IDEAS Conference
 - Visonex User Group Meeting
 - BONENT 2022 Northeast Seminar
- Publications
 - *Kidney Medicine Journal*
 - *Peritoneal Dialysis International*
 - *Current Opinion in Nephrology & Hypertension*

- Impact Assessment Report 2024 of CMS Quality and Efficiency Measures
- Dialysis Facility Quality of Patient Care Star Ratings
- ESRD PPS
- Slowing Progression of CKD TEP
- Transplant after care
- Health Equity
- CMMI Models Patient Advisory Group
- NKF Patient-Centered Measures Workshop DC 2022

Dissemination; Comparing Two Treatments for Depression among Patients with Kidney Failure Receiving Hemodialysis -- The ASCEND Study

- Webinar January 5, 2023 - Networks, patients, study investigators
- KPAC/NKF podcast
- KPAC perspective paper

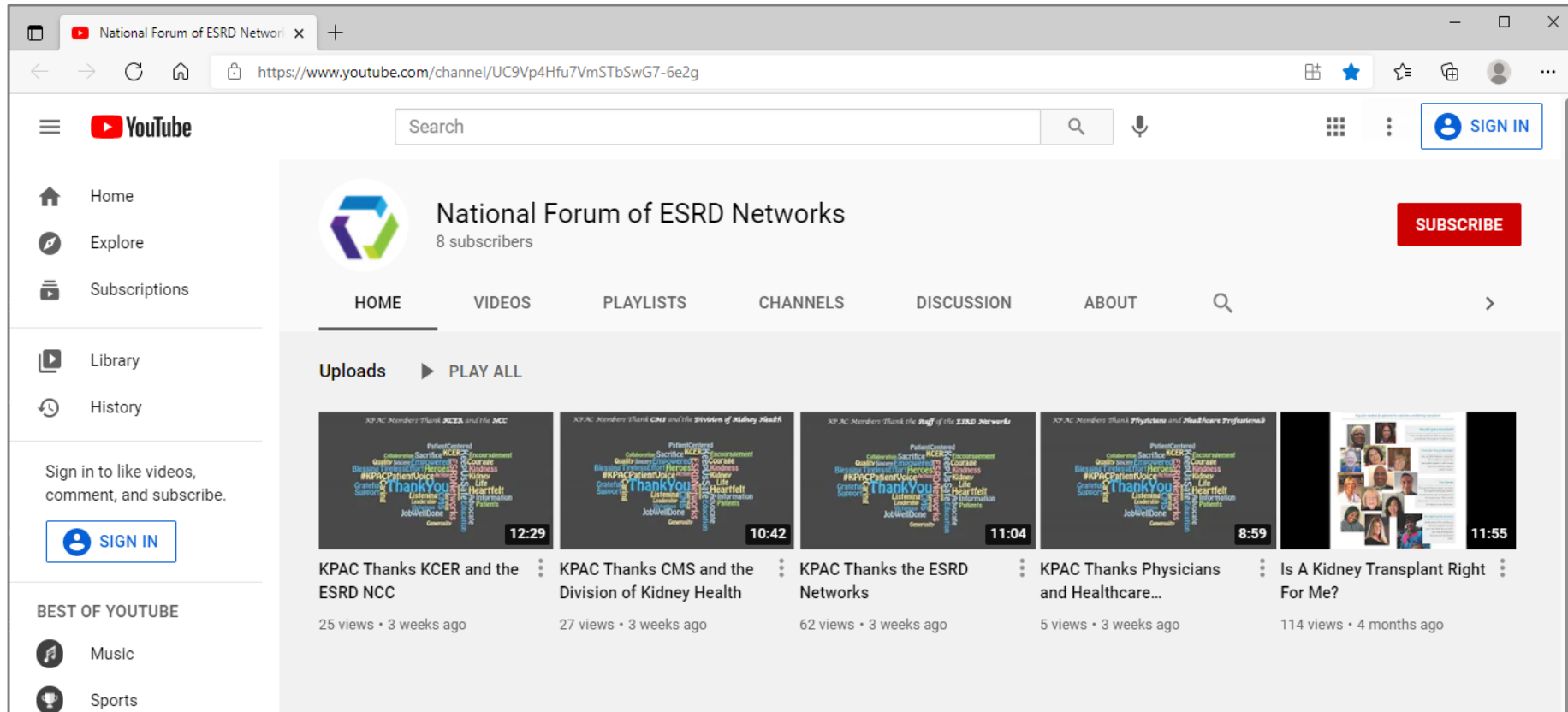
Current Toolkits:

- Dialysis Patient Depression Toolkit
- Dialysis Patient Grievance Toolkit
- Financial Help Resources
- “Is a Kidney Transplant Right for me?”
 - *Video available for patients providing an overview of the Transplant Toolkit, consider sharing with your patients!*

New/In-Progress Toolkits:

- MAC Home Dialysis Toolkit: KPAC Chapter providing patient perspective and experiences
- Health Equity and Access to Quality Care Toolkit
- Cardiovascular Disease and CKD Toolkit

Subscribe: <https://www.youtube.com/channel/UC9Vp4Hfu7VmSTbSwG7-6e2g>



The screenshot shows the YouTube channel page for the National Forum of ESRD Networks. The channel has 8 subscribers and a red 'SUBSCRIBE' button. The page features a navigation menu on the left with options like Home, Explore, Subscriptions, Library, and History. The main content area displays a row of five video uploads, each with a word cloud thumbnail and a duration. The videos are:

- KPAC Thanks KCER and the ESRD NCC** (12:29, 25 views • 3 weeks ago)
- KPAC Thanks CMS and the Division of Kidney Health** (10:42, 27 views • 3 weeks ago)
- KPAC Thanks the ESRD Networks** (11:04, 62 views • 3 weeks ago)
- KPAC Thanks Physicians and Healthcare...** (8:59, 5 views • 3 weeks ago)
- Is A Kidney Transplant Right For Me?** (11:55, 114 views • 4 months ago)

Thank You!



A sincere Thank You to the Renal Networks and your staff members who encourage patients to join the KPAC and support the work of our Council and the Forum!

Please feel free to contact Derek or Dawn if you have questions, concerns, or suggestions for the KPAC:

Derek: Derek.Forfang@gmail.com

Dawn: dawnpedwards@gmail.com



EDAC Report

Vicky Cash, MBA, BSN, RN
Chair, EDAC
ESRD Network 9

Chair:	Vicky Cash, MBA, BSN, RN
Vice Chair:	Mary Albin, BS, CPHQ
Networks 1/2	Sue Caponi, MBA, RN, BSN, CPHQ
Networks 3/4	Chris Brown
Network 5	Brandy Vinson
Network 6	Danielle Daley, MBA
Networks 7/13/15/17/18	Helen Rose, MSW, BSW, LCSW
Networks 8/14	Mary Albin, BS, CPHQ
Network 9	Victoria L. Cash, MBA, BSN, RN
Network 10	Audrey Broaddus
Network 11	Dee LeDuc
Network 12	Stephanie L. Smith
Network 16	Stephanie Hutchinson, MBA

- Executive Directors representing all 18 ESRD Networks
- Discuss issues affecting all Networks
- Determine gaps in knowledge and/or understanding
- Advise Forum Board, MAC and KPAC on areas that need to be addressed with CMS and Nephrology Community
- Share “best practices” and strategies for meeting/exceeding SOW deliverables and goals

Includes work on Five Goals:

1. Improve Behavioral Health Outcomes
 - a. Increase Depression screening and follow up treatment
2. Improve Patient Safety and Reduce Harm
 - a. Work with patients who dialyze in a nursing home to reduce access infection PD/LTC
3. Improve Care in High Cost/Complex Chronic Conditions
 - a. Includes three focuses:
 - Continued work on increasing transplant wait-listing and transplantation
 - Continued work on increasing home therapy initiations and continuation of home therapy
 - Lower COVID related Hospitalizations and work to improve ESRD compliance with Influenza, PCV and COVID vaccination
4. Reduce Hospital Admissions, Readmissions, and Outpatient ED Visits
5. Improve Nursing Home Care in Low Performing Providers – Utilizing high transfusion rates as a metric to improve care of ESRD patients in Nursing Homes

Continues Network Focus on:

1. Focus on Health Equity in all areas of quality improvement
2. Patient Experience of Care- Grievance management and Access to Care
3. Patient and Family Engagement – Patient involvement at the facility level – QAPI, Life Planning, and Peer Mentoring
4. Improve the quality of the patient registry in EQRS – Metrics for improvement provided
5. Strategic Program Management for Network region
6. Emergencies and Disaster Responsibilities

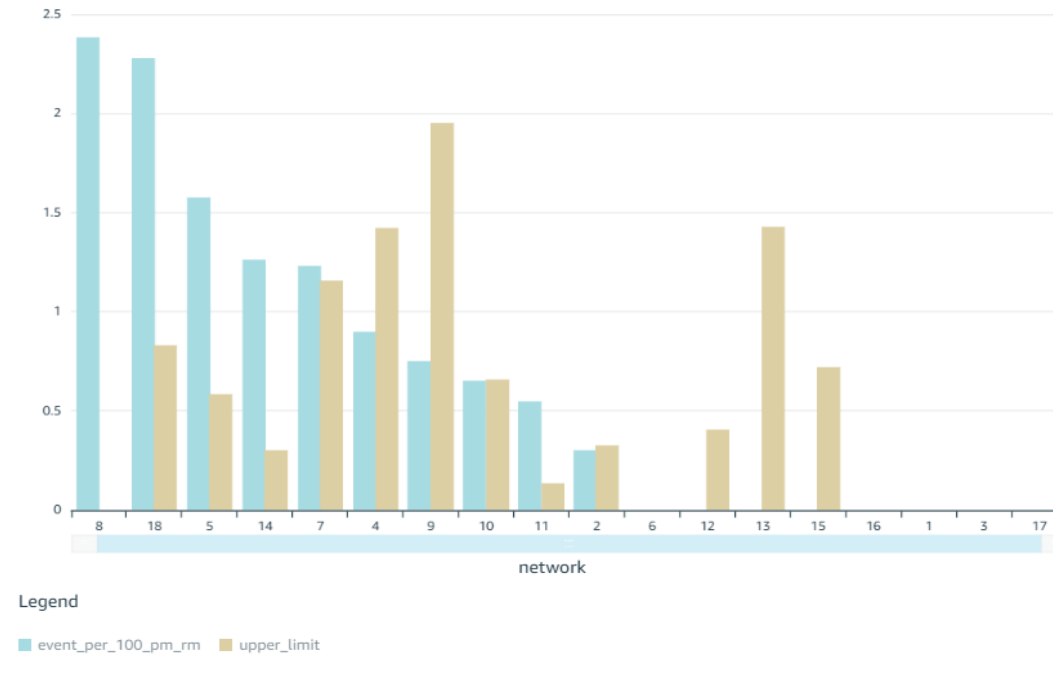
Improve Behavioral Health Outcomes

Goal	Baseline	Performance Goal (2022-2023)
Increase the % of patients accurately screened as having depression	EQRS/CROWNWeb	15% increase in the Network Service Area
Increase the % of patients with depression receiving treatment	EQRS/CROWNWeb	6% increase in the Network Service Area
Ensure accurate reporting of depression screening and mental health referrals	EQRS/CROWNWeb	80% of all facilities report results of monthly screenings in the NSA

Improve Patient Safety and Remove Harm

Decrease the Rate of Hemodialysis Catheter Infection in Dialysis Patients at Nursing Home

Adjusted SOW Value: 7.36% Decrease (Relative)



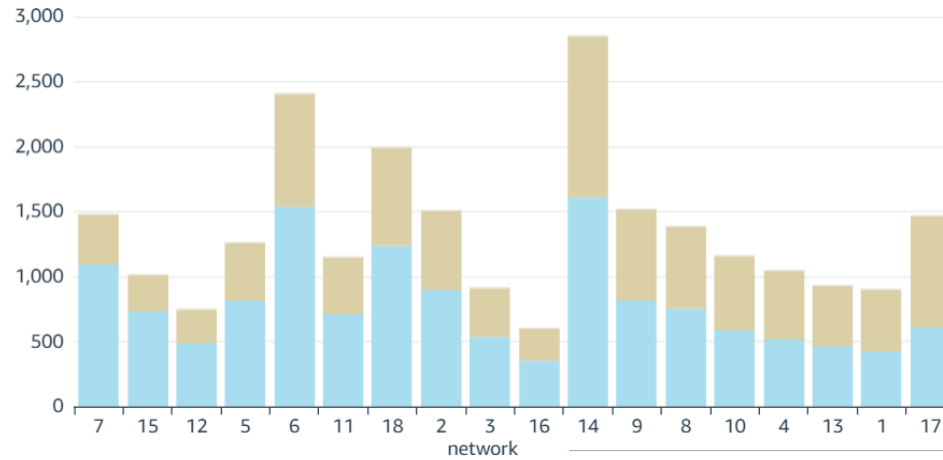
- This improvement goal is primarily focused on nursing home patients who receive a home therapy in the nursing home.
- There is an alternate model for Networks who do not have patients who have a home dialysis program within a nursing home. Those Networks were asked to work with a group of clinics who dialyze a larger amount of nursing home patients incenter.

Improve Care High-Cost Complex Care Conditions

Additions to the Waitlist and Transplanted Patients

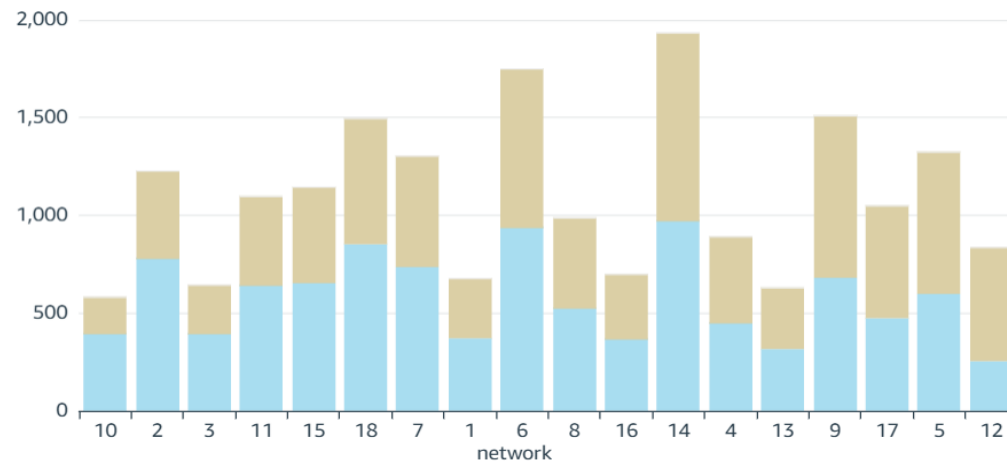
Added to Waitlist Progress to Target (Counts)

Hover over to see the percentage to goal and SOW goal.



Transplanted Progress to Target (Counts)

Hover over to see the percentage to goal and SOW goal.

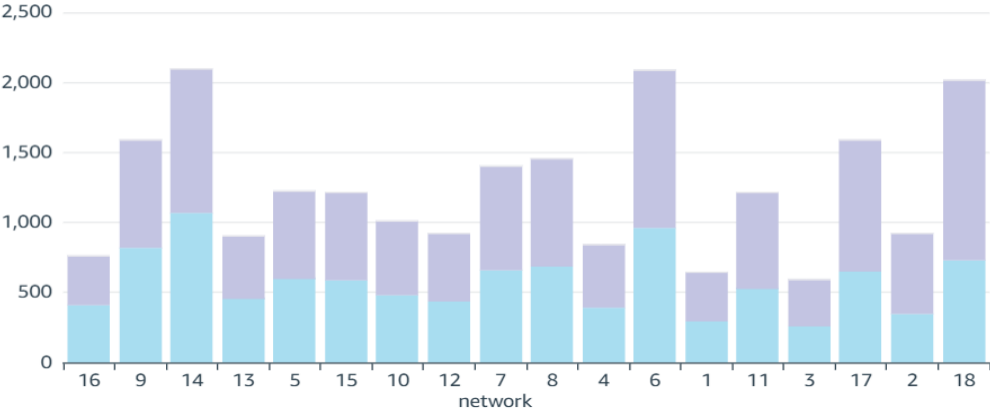


Improve Care High-Cost Complex Care Conditions

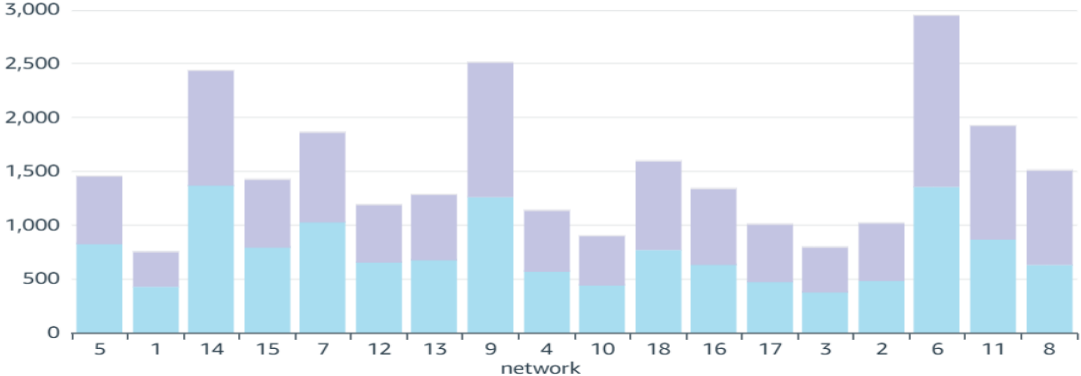


Increasing Incident start on Home and Incenter Transitions to Home

Number of patients using home dialysis (Incident to Home)
 Hover over to see the percentage to goal and SOW goal.



Number of patients using home dialysis (Transition to Home)
 Hover over to see the percentage to goal and SOW goal.

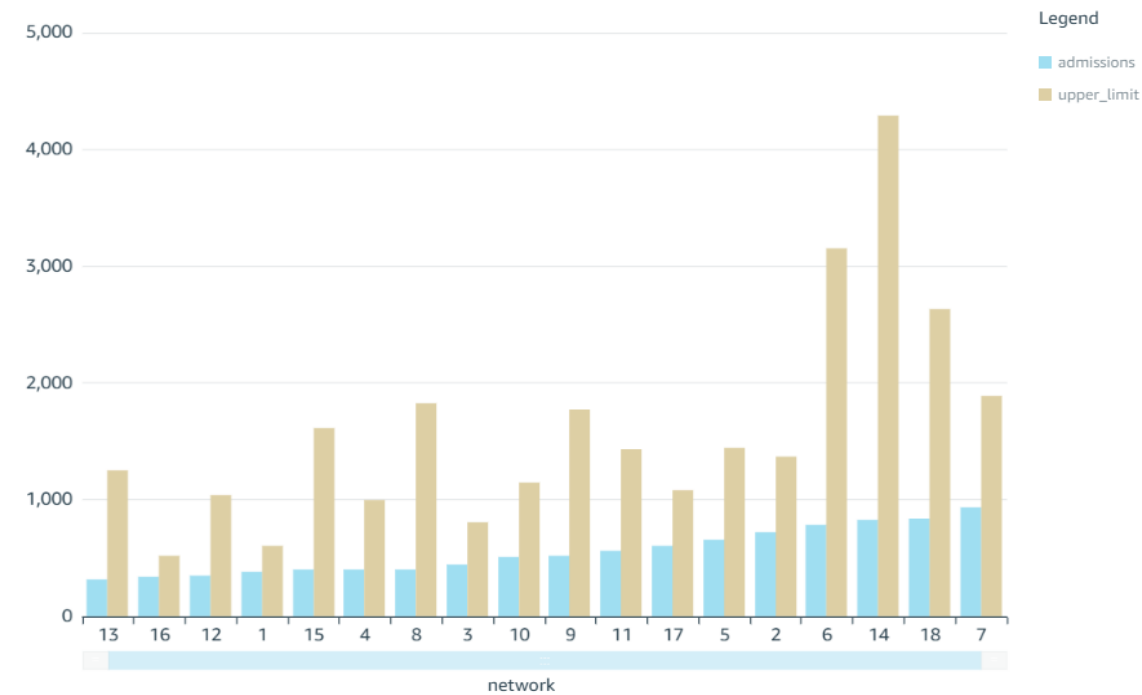


Improve Care High-Cost Complex Care Conditions

Decreasing COVID Hospitalizations and Improving Vaccination

COVID admissions (note that lower values are better and targets are based on baseline totals)

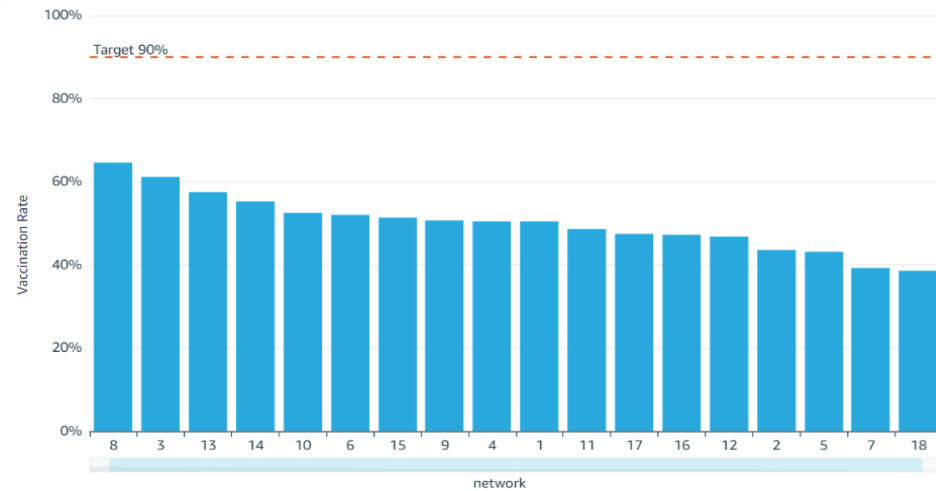
SOW Goal: 25% Decrease (Relative)



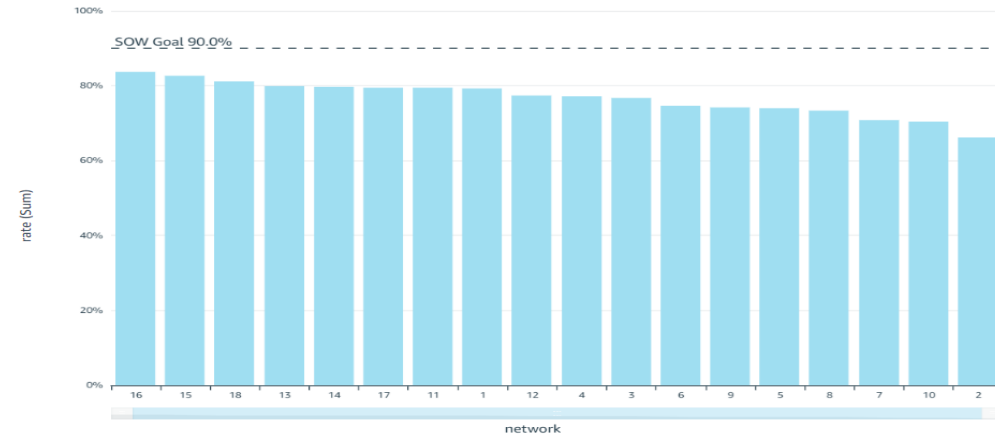
Improve Care High-Cost Complex Care Conditions

Decreasing COVID Hospitalizations and Improving Vaccination

Patient Influenza Vaccination Trend by Network



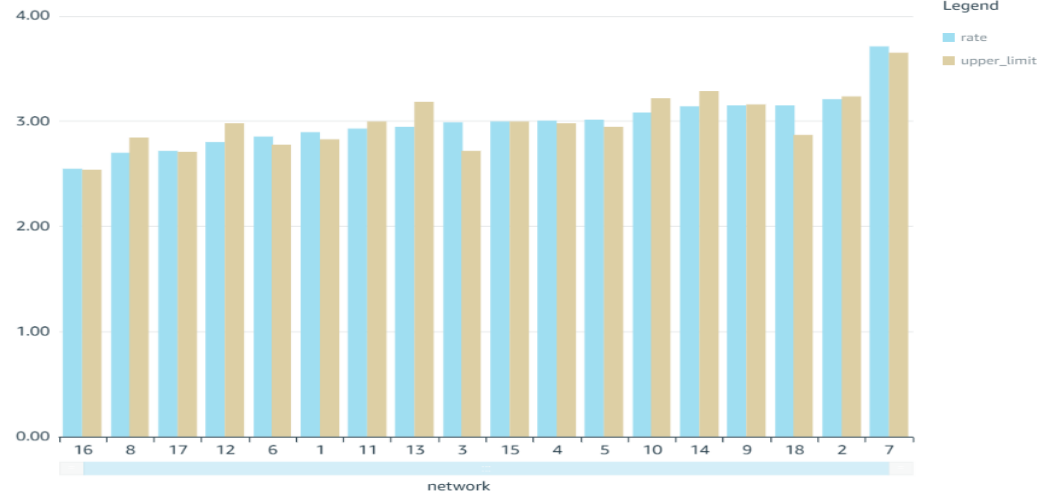
PPSV23 Initial (Patients Age 7 or Older That Have PPSV23 Vaccination)
SOW Goal: 90% (Absolute)



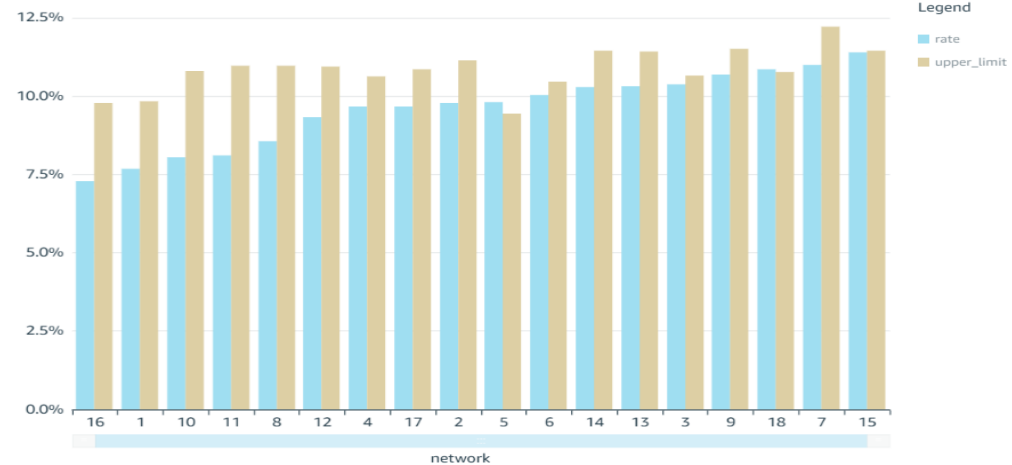
Reduce Hospital Admissions, Readmissions, & ED Visits

Reducing Hospital Admissions and Readmissions

Number of ESRD-related Inpatient Admissions per 100 patient-months (lower rates are better)
SOW Goal: 5% Decrease (Relative)



Number of Discharges Followed by Readmission with 30 Days
(Lower Rates are Better)
SOW Goal: 5% Decrease (Relative)



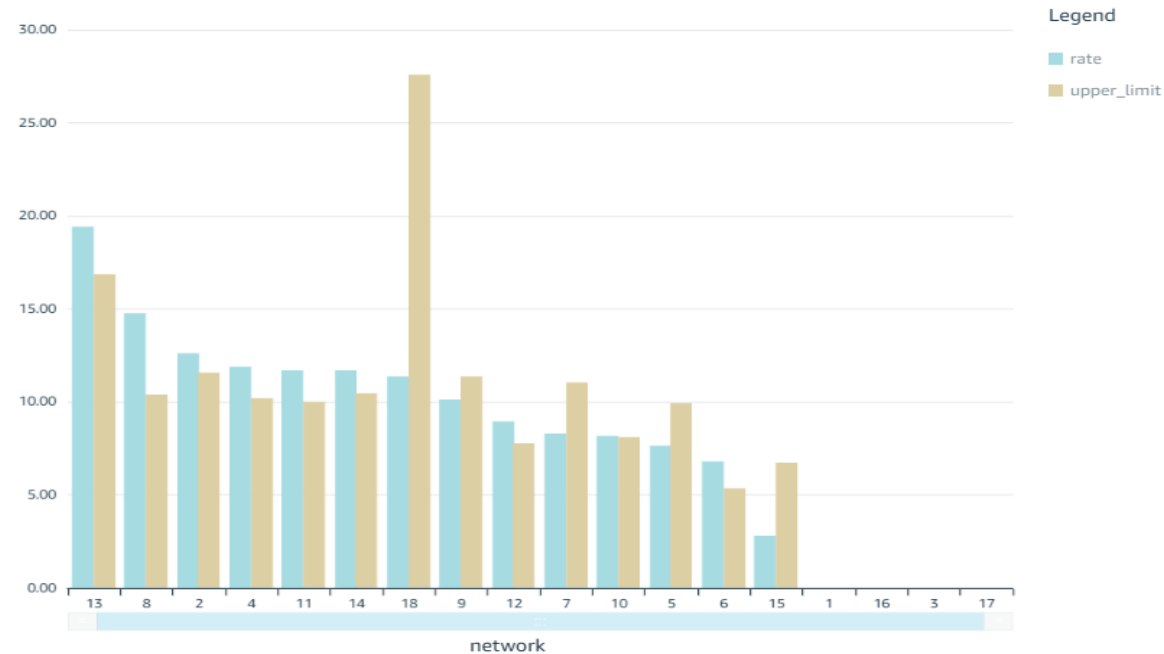
Improve Care in Low-Performing Facilities

Decrease the Rate of Blood Transfusions * Nursing Home

Decrease the Rate of Blood Transfusions in Dialysis Patients at Nursing Home

Adjusted SOW Value: 3.64% Decrease (Relative)

Lower Numbers are Better



Networks work to improve clinical outcomes and ...

1. Support Facilities and Patients as they transition from into a post pandemic healthcare environment
2. Reinvent QI to ease burden in healthcare staffing crisis.
3. Introduce Health Equity in quality improvement efforts
4. Ensure equitable access to care and work to avert IVD's in a socially charged environment.
5. Improve patient empowerment through activation and engage the ESRD patient community.
6. Expand focus on transplantation and incident transitions to a preferred modality.
7. Support through mounting national disasters and emergencies



MAC Report

Dan Landry, DO, FASN
Chair, MAC
ESRD Network I

AGENDA
Medical Advisory Council (MAC) Meeting
Orlando, FL
Wednesday, November 2, 2022



	Agenda Item	Speaker
6:00 pm	Welcome & Introductions	Dan Landry, DO
6:05 pm	IVD: Forum Approach for Improving Health Equity in Dialysis	Dan Landry, DO/Kam Kalantar-Zadeh, MD, PhD
6:25 pm	Guest Speaker: Tim Pflederer, MD, President, RPA	Tim Pflederer, MD
6:45 pm	Open Discussion with RPA, CMS, and NCC	
7:00 pm	Forum President: Organizational Updates	Dave Henner, DO
7:15 pm	Kidney Patient Advisory Council (KPAC) Update	Derek Forfang/Dawn Edwards
7:30 pm	Executive Directors Advisory Council (EDAC) Update	Vicky Cash, MBA, BSN, RN/Mary Albin, BS, CPHQ
7:45 pm	Open Discussion	
8:00 pm	ETC Model Year 1 Update	Andy Howard, MD
8:15 pm	Dialysis Critical Staffing Shortages and Input to CMS	Don Molony, MD
8:30 pm	MAC Chair Activity Updates	Dan Landry, DO
8:50 pm	Final Thoughts, Assignments, and Open Discussion	Dan Landry, DO
9:00 pm	Adjourn	

- Q1 2022 MAC Conference Call: Thursday **March 11, 2022**
- Q2 MAC Quarterly Conference Call: Thursday **June 16, 2022**
- Q3 MAC Quarterly Conference Call: Thursday **Sep 1, 2022**
- Forum BOD Meeting: Fri/Sat **Sep 9-10, 2022**, Chicago, IL
- Q4/Annual MAC Conference: Wed **Nov 2, 2022**, 6 pm ET, Orlando, FL

Chair: Daniel L. Landry, DO, FASN

Vice Chair: Preethi Yerram, MD, MS, FASN

Immediate Past Chair: Kam Kalantar-Zadeh, MD, MPA, PhD

Network 1: Daniel L. Landry, DO, FASN

Network 2: George Coritsidis, MD

Network 3: Keith Norris, MD, PhD

Network 4: Paul Palevsky, MD

Network 5: Marc Brazie, MD

Network 6: John J. Doran, MD, FASN

Network 7: Debra Hain, PhD, APRN, AGPCNP-BC

Network 8: Martha Tankersley, MSN, RN

Network 9: Anne Huml, MD, MS

Network 10: Andres Serrano, MD

Network 11: Louis Raymond, MD

Network 12: Preethi Yerram, MD, MS, FASN

Network 13: Laura Rankin, MD

Network 14: Donald Molony, MD

Network 15: Harmeet Singh, MD

Network 16: John Stivelman, MD

Network 16 Alt: Christine Logar, MD

Network 17: Ramin Sam, MD

Network 18: Kam Kalantar-Zadeh, MD, MPH, PhD

Ad Hoc Member: Stephen Pastan, MD

**EDAC Rep: Sue Caponi, MBA, RN, BSN, CPHQ
(1/2)**

QID Rep: Barbara Dommert-Breckler, RN,
BSN, CNN (16)

KPAC Rep: Derek Forfang (17)

Welcome New MAC Members!



MARTHA TANKERSLEY, MSN, RN

- MAC representative from Network 8 (Chair of NW8 MRB)
- From Birmingham, Alabama, and has been with University of Alabama at Birmingham since 1987
- BSN from Boston College (1987) and her MSN from the AUB (2000)
- Held a variety of clinical and leadership roles throughout her 35+-year career in healthcare – RN, transplant coordinator, nurse practitioner, and healthcare administrator
- Spent a large part of her career in the field of organ transplantation, and currently serves as Assistant Vice President/ Transplant Administrator at UAB's Comprehensive Transplant Institute, one of the busiest transplant centers in the country.

SUE CAPONI, MBA, RN, BSN, CPHQ

- EDAC representative
- Executive Director, ESRD Networks 1 & 2
- BSN from Adelphi University (2006) and MBA from Dowling College (2013)
- Previously directed the emergency and critical care services of a large Long Island hospital

Welcome Dr. Yerram, MAC Vice Chair!



Preethi Yerram, MD, MS, FASN - ESRD Network 12

Dr. Yerram is a professor of Medicine in the Division of Nephrology at the University of Missouri - Columbia, and a staff nephrologist at the Harry S. Truman Veterans Administration Hospital. She also serves as the primary transplant physician for the University of Missouri Health Care's Kidney Transplant Program. She served as the medical director for home/transitional care units as well as acute dialysis units in Columbia, MO, and has been actively engaged in the ESRD Network activities and advocacy. She currently serves as the chair of ESRD Network 12's Medical Review Board and is a member of the National Forum of ESRD Networks' Board of Directors (BOD) and Medical Advisory Council (MAC). She is the immediate past chair of the Missouri Kidney Program's Advisory Council. In addition, Dr. Yerram serves as the lead facilitator for the Missouri Telehealth Network's 'Kidney disease ECHO,' a telehealth educational initiative, the goal of which is to educate and empower rural primary care providers to better diagnose and manage chronic kidney disease. In her multiple roles, Dr. Yerram's focus is on improving the care of patients with kidney disease.

- *Communication: with CMS, Networks*
- *Education: Toolkits, KPAC collaboration, RPA*
- *Delivery: Reaching our Network audience and other organizations (ASN, RPA, NKF, NCC)*
 - *Support our Networks through promotion of education of nephrology training program directors and early-career nephrology providers*
 - *Encourage value-based care through education and advocacy with CMS*
 - *Take back what we are doing to Network-level*



Get the Updated (*Bivalent*) COVID-19 Vaccine Booster Fact Sheet for Dialysis Patients October 2022

What is the updated *bivalent* booster vaccine?

- The updated COVID-19 vaccine includes a part of the original virus strain to provide broad protection against COVID-19 and a part of the Omicron variant to provide better protection against COVID-19 caused by the Omicron variant.
- These are called *bivalent* COVID-19 vaccines because they contain these two parts.

Why should I get the updated booster?

- Vaccines are used to help teach our body's immune system to fight off specific infection.
- Dialysis patients who develop COVID-19 infection are at higher risk of severe illness and death than non-dialysis patients.
- Several COVID-19 vaccines available in the US have been shown to provide protection against severe infection in over 90% of dialysis patients!
- Being protected against COVID-19 not only protects you, but also your friends and loved ones by preventing the spread of this dangerous infection.
- COVID-19 vaccines do not cause COVID-19 infection.

Which one should I get?

- You can get either the Pfizer or Moderna updated booster vaccine. Mixing and matching is okay.

Can I receive the updated booster vaccine at the same time I receive my yearly influenza (flu) vaccine?

- Yes. It is safe to receive the flu vaccine and updated COVID-19 booster at the same time. If you have had issues with vaccines in the past or have recently had COVID-19, talk with your doctor.

Can the COVID-19 vaccine give me side effects?

- The most common side effects are injection site pain, muscle aches, and fever. These symptoms are normal and are a sign that the body is building up your defenses against infection.



Reciba la Vacuna de Refuerzo (*Bivalente*) Actualizada para el COVID-19 Hoja Informativa para Pacientes en Diálisis Octubre 2022

¿Qué es la vacuna de refuerzo *bivalente* actualizada?

- La vacuna actualizada contra el COVID-19 incluye una parte de la cepa original del virus para proporcionar una amplia protección contra el COVID-19 y una parte de la variante **Omicron** para proporcionar una mejor protección contra el COVID-19 causada por la variante de **Omicron**.
- Estas se llaman vacunas *bivalentes* contra el COVID-19 porque contienen estas dos partes.

¿Por qué debería recibir el refuerzo actualizado?

- Las vacunas se utilizan para ayudar a enseñar al sistema inmunológico de nuestro cuerpo a combatir infecciones específicas.
- Los pacientes en diálisis que desarrollan infección por el COVID-19 tienen un mayor riesgo de enfermedad grave y muerte a pacientes que no reciben diálisis.
- ¡Varias vacunas disponibles en los Estados Unidos para el COVID-19 han demostrado que brindan protección contra infecciones graves en más del 90% de los pacientes en diálisis!
- Estar protegido contra el COVID-19 no solo lo protege a usted, sino también a sus amistades y seres queridos al prevenir la propagación de esta peligrosa infección.
- Las vacunas para el COVID-19 no causan la infección del COVID-19.

¿Cuál debería recibir?

- Puede recibir la vacuna de refuerzo actualizada de Pfizer o Moderna. Mezclar y combinar está bien.

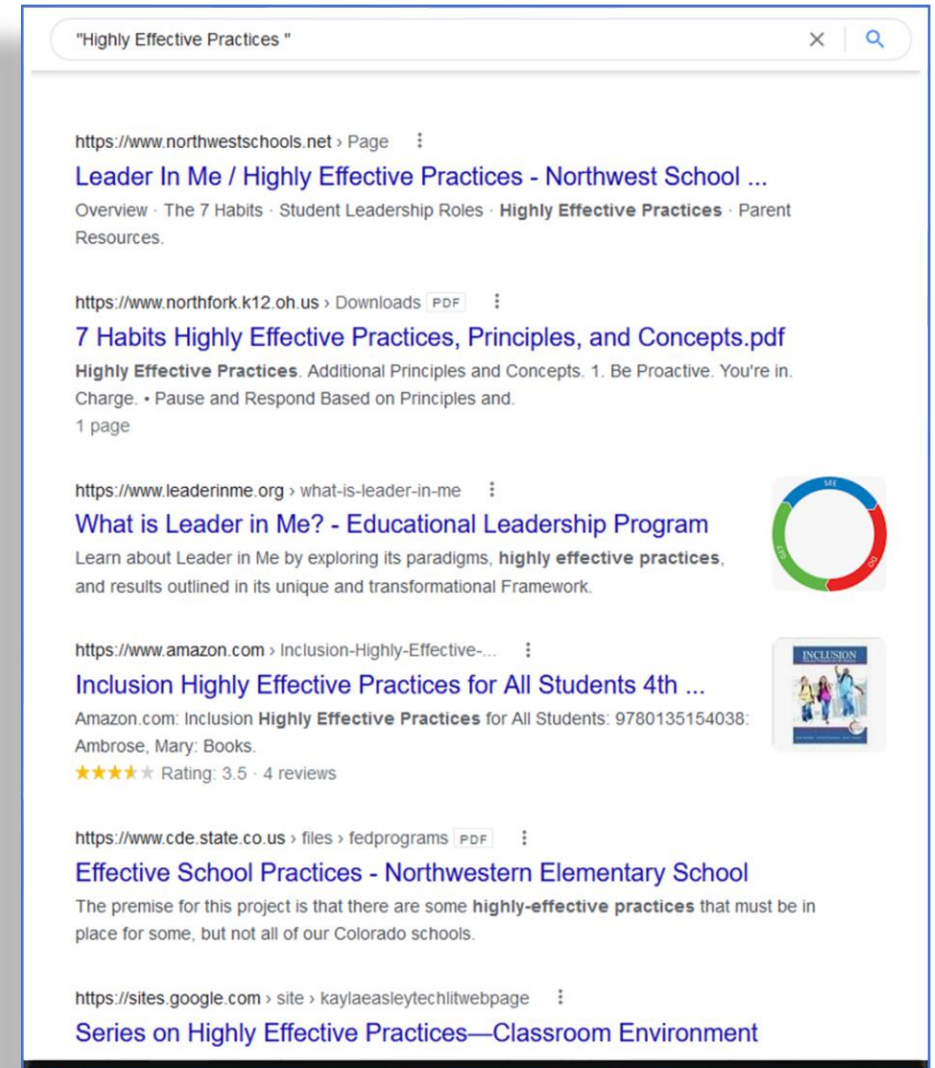
¿Puedo recibir la vacuna de refuerzo actualizada al mismo tiempo que recibo mi vacuna anual contra la influenza (flu)?

- Sí. Es seguro recibir la vacuna contra la influenza y el refuerzo actualizado para el COVID-19 al mismo tiempo. Si ha tenido problemas con las vacunas en el pasado o ha tenido COVID-19 recientemente, hable con su médico.

¿Puede la vacuna contra el COVID-19 causarme efectos secundarios?

- Los efectos secundarios más comunes son dolor en el lugar de la inyección, dolores musculares y fiebre. Estos síntomas son normales y son una señal de que el cuerpo está construyendo sus defensas contra la infección.

- **Sharing Highly Effective Practices (SHEP)**
- Sharing Highly Effective Practices page was launched on website
- Three submissions approved to date
 - Monthly Chairside IDT Meetings
 - COVID-19 Communication Between SNF/PCH & Dialysis Facilities
 - Second Chance: A 90-Day Trial Basis Program



Sharing Highly Effective Practices (SHEP)

SHEP Submission	Topic	Date Received
#7	Transplant Checklist	9/10/2022
#8	Wellness	9/22/2022
#9	Home Dialysis	10/6/2022
#10	Emergency Portal	10/11/2022
#11	QI Platform	10/14/2022
#12	Facility Performance Reports	10/14/2022
#13	Emergency Prep Community Drill	10/14/2022
#14	Volume Management	10/16/2022
#15	Transplant Reports	10/18/2022
#16	Home Dialysis Task Force	10/19/2022
#17	Home Dialysis QAPI Form	10/21/2022
#18	Hospitalization Tracking	10/23/2022
#19	Emergency App	10/24/2022
#20	Infection Control Audits	10/24/2022

MAC Toolkits

1. *Inpatient* Dialysis Medical Director Toolkit
2. Vaccination Toolkit
3. *Outpatient* Dialysis Medical Director Toolkit
4. Transitions of Care Toolkit
5. Home Dialysis Toolkit (updating currently)
6. Transplant Toolkit (pre-COVID) (update discussed)
7. Catheter Reduction Toolkit (pre-COVID)
8. QAPI Toolkit (pre-COVID)
9. **CKD Care Planning & Measures** toolkit (new)
10. **Conservative Mgmt & Supportive Care** toolkit (new)
11. **Practicing Health Equity and Patient-Provider Collaboration** toolkit (new)
12. Dialysis Communications and Quality (future)

2021

Vaccination Toolkit

Developed by the Forum of ESRD Networks' Medical Advisory Council (MAC)

This toolkit for health providers and practitioners is a reference tool that provides information about vaccination requirements for kidney patients in the dialysis facility.

Tell us what you think!
Please take a moment to complete a short questionnaire about this Toolkit. We appreciate your insight and suggestions to make our resources better.
<https://www.surveymonkey.com/r/ForumResEval>

Forum Medical Advisory Council (MAC)
 The Forum of ESRD Networks
 First Publication: 08/01/2009
 Revised: 08/01/2011
 Revised: 01/08/2020
 Revised: 08/05/2021
 © Copyright, Forum of ESRD Networks, 2021

updated Aug 2021 →

review article in development by Dr Ramin Sam (in collab w/ Dr Laura Rankins...)

Authors - 2009	
Stuart Goldstein, MD - Subcommittee Chair Baylor College of Medicine Texas Children's Hospital Houston, Texas ESRD Network 14	James McCarthy, MD Mayo Clinic Dialysis Rochester, Minnesota ESRD Network 11
Richard Paul, MD Piedmont Nephrology Hickory, North Carolina ESRD Network 6	Darlene Rodgers, BSN, RN, CNN, CPHQ Intermountain ESRD Network, Inc. Lakewood, Colorado ESRD Network 15

Aut
Ramin Sam, MD – Subcommittee Zuckerberg San Francisco General University of California, San Francisco San Francisco, California ESRD Network 17
David Henner, DO Berkshire Medical Center Pittsfield, Massachusetts ESRD Network 1
Kamyar Kalantar-Zadeh, MD, MPH Univ. of California Irvine, School of Orange, California ESRD Network 18
Daniel L. Landry, DO, FASN Baystate Medical Center Springfield, MA ESRD Network 1

[VACCINATION TOOLKIT]
August 5, 2021

Table of Contents

GENERAL INFORMATION	
Introduction	4
Pneumococcal Vaccination.....	5
Influenza Vaccination	6
COVID-19 Vaccination for patients receiving dialysis therapy	6
Other vaccinations not routinely give during dialysis	11
Vaccinating the transplant patient.....	12
How to Use this Toolkit	13
Quality Assessment & Performance Improvement Plan: Patient Immunization	14
Example: Vaccination Action Plan Template.....	15
DATA TOOLS	
Immunization Data Collection Tool	18
Immunization Monthly Intervention Tracking Tool	19
RESOURCES AND REFERENCES	
Quality Assessment and Performance Improvement (QAPI) for ESRD Medical Directors	22
Pneumonia Vaccine Protocol	23
Immunization Resources Available on the Internet	24
CDC Guidelines for Vaccinating Kidney Dialysis Patients & Patients with Chronic Kidney Disease ...	25

Home Dialysis Toolkit Update Coming Soon

2016

Home Dialysis Toolkit

Developed by the Forum of ESRD
Networks' Medical Advisory Council
(MAC)

This toolkit for health providers and practitioners is a reference tool that gives information about overcoming barriers to starting or growing a home dialysis program.

*Tell us what you think!
Please take a moment to complete a short questionnaire about
this Toolkit. We appreciate your insight and suggestions to
make our resources better.*

<https://www.surveymonkey.com/r/ForumResEval>



Tasks & Progress to Date

- New sections to address AAKH and CfC updates
- Emergency management of home dialysis patients
- Impact of ESCOs, ETC Model, Voluntary Models on home therapies
- Enhanced modality education: transitional care and self care
- Emerging Technology and the impact and benefits to home therapies
- Addressing Disparities and Access to Care
- Home therapy options in the LTC/nursing home setting
- KPAC Section: Empowering patients and care partners to be successful at home

Home Dialysis Toolkit Update Coming Soon



Disasters at Home; Important Facts for Home Dialysis Providers

Chapter 3: Emergency Management for the Home Dialysis Program

Chapter Synopsis

- Emergency preparedness for home dialysis requires communication and planning for both patients and staff.
- CMS Emergency Preparedness Requirements state that each program should include 4 major elements: risk assessment and emergency planning, policies and procedures, communication planning, and training and testing
- For home dialysis staff, emergency preparedness training, back-up communication planning, and coordination of patient care are critical aspects that must be provided to at both the general and individual level.
- For home dialysis patients, emergency preparedness means involvement with training and preparation with the home dialysis unit, continuous readiness with emergency and dialysis supplies, and planning for scenarios of when one *cannot* leave their home as well as when *must* leave their home.
- The National Forum of ESRD Networks works closely with the Kidney Community Emergency Response (KCER) during emergencies and are both important resources for up-to-date information, communication, and directed support.

Volunteers	Tasks & Progress to Date
Yerram, Serrano, Doran, Dommert-Breckler, Henner, Kalantar, Landry, Molony KPAC: Edwards, Forfang, Major, Bologna	<ul style="list-style-type: none"> • New sections to address AAKH and CfC updates • Emergency management of home dialysis patients • Impact of ESCOs, ETC Model, Voluntary Models on home therapies • Enhanced modality education: transitional care and self care • Emerging Technology and the impact and benefits to home therapies • Addressing Disparities and Access to Care • Home therapy options in the LTC/nursing home setting • KPAC Section: Empowering patients and care partners to be successful at home

CKD Care Planning & Measures toolkit

- Joint Toolkit by **MAC** and other stakeholders

Conservative Management & Supportive Care toolkit

1. Supportive Care (including Hospice and Palliative Care)
2. Kidney Preserving Therapy without Dialysis (Medical Therapy)

Practicing Health Equity and Patient-Provider Collaboration toolkit

-Joint Toolkit by **MAC and KPAC** and other stakeholders

August 22, 2022

The Honorable Chiquita Brooks-LaSure, Administrator
Centers for Medicare & Medicaid Services
Department of Health and Human Services
Attention: CMS-1768-P
7500 Security Boulevard
Baltimore, MD 21244-1850

RE: CMS-1768-P: Medicare Program; End-Stage Renal Disease Prospective Payment System, Payment for Renal Dialysis Services Furnished to Individuals with Acute Kidney Injury, End-Stage Renal Disease Quality Incentive Program, and End-Stage Renal Disease Treatment Choices Model

Dear Administrator Brooks-LaSure:

The National Forum of ESRD Networks appreciates the opportunity to comment on the proposed changes in CMS-1768-P. We have primarily focused our comments on those sections of the proposed rule that specifically relate to the renal dialysis services furnished and the ESRD Quality Incentive Program (QIP) along with the ESRD Treatment Choices (ETC) model published in the Federal Register on June 28, 2022. Keeping in mind the Department of Health and Human Services' objectives for the Meaningful Measures Initiative 2.0 as a component of the CMS Quality Measurement Action Plan, we have highlighted our comments on those changes that can be anticipated to affect quality of care and access to ESRD treatment with a commitment to person-centered care and equity in care. We are aware of the continued importance of the QIP and ETC model in the Advancing American Kidney Health (AAKH) initiative. We have limited our comments to those sections of the proposed rule that pertain to the ESRD QIP and proposed changes to the ETC model and limited sections of the PPS that could be anticipated to impact quality of care and access to equitable treatment for all beneficiaries.

Following are our comments.

Forum Comments/Issues Addressed:

- Concerns regarding CY 2021 transition of calcimimetics to PPS bundle w/o adjustment since
- Consider adjustment to ESRD PPS bundled payment base rate to help accommodate for difelikefalin once TDAPA coverage concludes on 3/31/2024.
- Consider further review of proposed changes to “oral-only drug” definition and how such restrictions affect patient access to care.
- Recommendation that no facility be scored or have payment reduced for QIP performance year 2021 (payment year 2023)
- COVID-19 HCP Vaccination reporting measure PY 2025
- RFI:
 - Quality indicators for home dialysis
 - Screening for Social Drivers of Health
 - ETC payment methodology and KDE changes
 - Add-on payments after TDAPA period ends

- Letter to CMS on behalf of DDS (Dr. Coffee):

CMS proposed rule for CY 2023 includes policy amendments to § 411.15(i)(3) to specify that “payment under Medicare Parts A and B can be made for an oral or dental examination, and medically necessary diagnostic and treatment services to eliminate an oral or dental infection, prior to an organ transplant, cardiac valve replacement, or valvuloplasty procedure.”

- Comments to National Quality Forum regarding specific measures evaluated by its Renal Standing Committee:

***NQF #2594 Optimal End-Stage Renal Disease (ESRD) Starts:** In summary, while the Forum sees room for growth and opportunity when it comes to monitoring quality through the Optimal End-Stage Renal Disease Starts measure, we fully support the NQF’s decision to endorse this measure.*

Admission/Readmission Diagnostic Codes

Anemia Management:

- D649 Anemia unspecified

Blood Pressure Management:

- I120 Hypertensive chronic kidney disease stage 5 or end stage renal disease
- I161 Hypertensive Emergency
- I169 Hypertensive Crisis, Unspecified

Cardiac-related:

- I214 Non-ST elevation (N STEMI) myocardial infarction
- I2510 Atherosclerosis heart disease of native coronary artery without angina pectoris
- R079 Chest pain, unspecified

Endocrine-related:

- E162 Hypoglycemia, unspecified
- E1110 Diabetes Type 2 with ketoacidosis without coma
- E1122 Diabetes type 2 with diabetic chronic kidney disease

Fluid Balance-related:

- E8770 Fluid overload unspecified
- E8779 Other fluid overload
- J810 Acute pulmonary edema

Infection-related:

- A419 Sepsis, unspecified organism
- A4101 Sepsis due to Methicillin Susceptible Staphylococcus aureus
- A4102 Sepsis due to Methicillin Resistant Staphylococcus aureus
- A4150 Gram-negative sepsis, unspecified
- A4181 Sepsis due to Enterococcus
- T8571 Infection and inflammatory reaction due to peritoneal dialysis catheter
- T80211 Bloodstream infection due to central venous catheter

Mineral Metabolism:

- E871 Hypo-osmolality and hyponatremia
- E875 Hyperkalemia
- E876 Hypokalemia

Vascular-related:

- T82838 Hemorrhage due to vascular prosthetic devices, implants and grafts
- T82858 Stenosis of other vascular prosthetic devices, implants and grafts
- T82868 Thrombosis due to vascular prosthetic devices, implants and grafts

CMS-proposed list of attributable causes for hospital admission/readmission of ESRD patients

Admission/Readmission Diagnostic Codes

Anemia Management:

- ~~D649 Anemia unspecified~~

Blood Pressure Management:

- ~~I120 Hypertensive chronic kidney disease stage 5 or end stage renal disease~~
- I161 Hypertensive Emergency
- I169 Hypertensive Crisis, Unspecified

Cardiac-related:

- I214 Non-ST elevation (N STEMI) myocardial infarction
- ~~I2510 Atherosclerosis heart disease of native coronary artery without angina pectoris~~
- R079 Chest pain, unspecified

Endocrine-related:

- E162 Hypoglycemia, unspecified
- E1110 Diabetes Type 2 with ketoacidosis without coma
- E1122 Diabetes type 2 with diabetic chronic kidney disease

Fluid Balance-related:

- E8770 Fluid overload unspecified
- E8779 Other fluid overload
- J810 Acute pulmonary edema

Infection-related:

- A419 Sepsis, unspecified organism
- A4101 Sepsis due to Methicillin Susceptible Staphylococcus aureus
- A4102 Sepsis due to Methicillin Resistant Staphylococcus aureus
- ~~A4150 Gram negative sepsis, unspecified~~
- ~~A4181 Sepsis due to Enterococcus~~
- T8571 Infection and inflammatory reaction due to peritoneal dialysis catheter
- T80211 Bloodstream infection due to central venous catheter

Mineral Metabolism:

- E871 Hypo-osmolality and hyponatremia
- E875 Hyperkalemia
- E876 Hypokalemia

Vascular-related:

- T82838 Hemorrhage due to vascular prosthetic devices, implants and grafts
- T82858 Stenosis of other vascular prosthetic devices, implants and grafts
- T82868 Thrombosis due to vascular prosthetic devices, implants and grafts

Forum Recommendations

- Substitution (or addition) of **D631** (Anemia of Chronic Kidney Disease)
- **I161** (Hypertensive Emergency) and **I169** (Hypertensive Crisis, Unspecified) and **I160** (Hypotensive Urgency)
- **I214** (Non-ST Elevation Myocardial Infarction) and **R079** (Chest Pain, Unspecified) are appropriate diagnostic codes if such events occurred during dialysis
- Add other fluid-related measures such as **I509** (Congestive Heart Failure, Unspecified), **E8770** (Hypervolemia), and acute systolic and/or diastolic heart failure codes (**I5021**, **I5023**, **I5031**, **I5033**, and **I5041**)
- Add **E8339** (Hyper- and Hypophosphatemia), **E8351** (Hypocalcemia), and **E8352** (Hypercalcemia)
- **T827** (Infection and Inflammatory Reaction due to Other Cardiac and Vascular Devices, Implants and Grafts)

Addressing Involuntary Discharges (IVD)

- Each year there are 400-500+ Involuntary discharges
 - 250-320 (58.5% - 67.1%) are due to Threats and Abusive behaviors
 - 10.2% - 20.8% are 30 day discharges,
 - 79.2% -89.0% are immediate discharges
- Each year one fifth (about 90-100) IVDs are physician terminations
 - Over 50% of physician terminations are for non-compliance or no-show appointments for which the CfC's do not consider as legitimate discharges

The ESRD NCC is looking at two questions:

1) what happens to patients that are IVD's

- Likelihood of placement in another facility
- Health care services/hospital utilization
- Mortality
 - Preliminary risk analysis shows 1.80 OR for mortality for those with an IVD vs those without

2) Do IVD's patients have an impact on QIP scores?

- Debunking the mythology

Steven Preston, PhD, MPH
CMS SME PEOC/Case Review

Division of Kidney Health

(206) 615-2250

steven.preston@cms.hhs.gov

Looking for collaboration from ESRD Forum member to publish NCC IVD Analyses findings.

Addressing Involuntary Discharges (IVD)

HOW THE ESRD FORUM CAN ASSIST WITH IVD'S AND MEDICAL NON-COMPLIANCE DISCHARGES?

Excellent information is in the Medical Directors Toolkit, but the message evidently isn't getting through?

How can this information be distributed more effectively and efficiently ?

Can the Forum MAC speak to Dialysis Nephrologists more directly?

MRB members need to be more involved with working with Nephrologists and Medical Directors when IVD's occur?

Publication of analyses in Nephrology literature showing impact of IVD

ESRD NCC updating Decreasing Provider-Patient Conflict toolkit

Steven Preston, PhD, MPH
CMS SME PEOC/Case Review

Division of Kidney Health

(206) 615-2250

steven.preston@cms.hhs.gov

- *Collaboration with RPA and NKF (?workshops, webinars)*
- *Meet with ASN leadership to disseminate Forum's education through nephrology fellowship program directors*
- *Future efforts with Forum KPAC for YouTube videos*
- *Work with NCC to update DPC and creation of new toolkits focused on healthcare equity and Patient-Provider Collaboration*

Decreasing Dialysis-Patient Provider Conflict (DPC)

Addendum 2022

Table of Contents

Introduction.....	3
Health Equity	4
Self-Awareness.....	6
De-Escalation Techniques in Healthcare.....	8
When Conflict Occurs.....	10



Practicing health equity in involuntary discharges to overcome disparities in dialysis and kidney patient care

*Dawn P. Edwards^{a,b}, Kamyar Kalantar-Zadeh^{a,c}, Elani Streja^{c,d},
Rebecca S. Ahdoot^c, Keith C. Norris^e and Donald Molony^{a,f}*

Purpose of review

Potential causes and consequences of involuntary discharge (IVD) of patients from dialysis facilities are widely unknown. So, also are the extent of racial disparities in IVDs and their impact on health equity.

Recent findings

Under the current End-Stage Renal Disease (ESRD) program Conditions for Coverage (CFC), there are limited justifications for IVDs. The ESRD Networks oversee dialysis quality and safety including IVDs in US dialysis facilities, with support from the Agency for Healthcare Quality and Research (AHRQ) and other stakeholders. Whereas black Americans constitute a third of US dialysis patients, they are even more overrepresented in the planned and executed IVDs. Cultural gaps between patients and dialysis staff, psychosocial and regional factors, structural racism in kidney care, antiquated ESRD policies, unintended consequences of quality incentive programs, other perverse incentives, and failed patient-provider communications are among potential contributors to IVDs.

Summary

Practicing health equity in kidney care may be negatively impacted by IVDs. Accurate analyses of patterns and trends of involuntary discharges, along with insights from well designed AHRQ surveys and qualitative research with mixed method approaches are urgently needed. Pilot and feasibility programs should be designed and tested, to address the root causes of IVDs and related racial disparities.

Keywords

dialysis therapy, disruptive behavior, end-stage renal disease, in-center hemodialysis, involuntary discharge

KEY POINTS

- An involuntary discharge (IVD) of a dialysis patient from their treating facility has significant negative impacts on the health and safety of the effected patient and their care-partners and reducing IVDs is, therefore, a major goal of the CMS ESRD programs through the ESRD Networks.
- The burden of IVDs in the United States is disproportionately borne by younger African-American men significantly out of proportion to their percentage of prevalent dialysis patients.
- Uncovering the factors driving this disparity of care manifest as IVD, may provide insights into the causes of disparities in kidney care overall and the potential mechanisms for their potential mitigation.



Timothy A. Pflederer, MD, FASN, FASDIN
President, Renal Physicians Association

Mission of the RPA:

“To empower nephrology professionals through leadership development and mentorship; regulatory and legislative advocacy; and development and promotion of best business and care delivery practices.”



NATIONAL KIDNEY
FOUNDATION®

of Hawaii



Location: Hilton Hawaiian Village, 2005 Kalia
Road, Honolulu, HI 96815



Date: June 29-30, 2023

Start Time: 7:00 AM HST

THE NATIONAL
FORUM
OF ESRD NETWORKS

Living Well with Kidney Disease – Chronic Kidney Disease Care Planning and Health Equity Consensus Conference Honolulu, Hawaii

HYBRID MEETING CONVENTIONAL CONFERENCE

LOCATION: HILTON HAWAIIAN VILLAGE, HONOLULU, HAWAII

The Chronic Kidney Disease Care Planning and Health Equity Consensus Conference will be held on December 1st and 2nd, 2022, in Honolulu, HI, hosted by the **National Kidney Foundation of Hawaii** <http://www.kidneyhi.org> in collaboration with the **National Forum of ESRD Networks** <http://www.ESRDnetworks.org>.

Evolution of the Question of the Impact of Staffing Shortages on Kidney Care

- Regular topic on our regular and COVID related telephone calls with CMS for the last 4-5 months.
- Context:
 - Disruptions related to response to COVID
 - Restriction on access especially for patients with TDCs
 - Impact on quality of care
 - Impact on patient choices; limitation to expansion of home dialysis choices.
- Invitation from CMS, Post CMS call in October follow-up on our comments that we needed to expand the Kidney Care workforce.
- Comments and invitation from Anita Monteiro.



Financial Highlights

Stephanie Hutchinson, MBA
Treasurer
ESRD Network 16

Balance Sheet



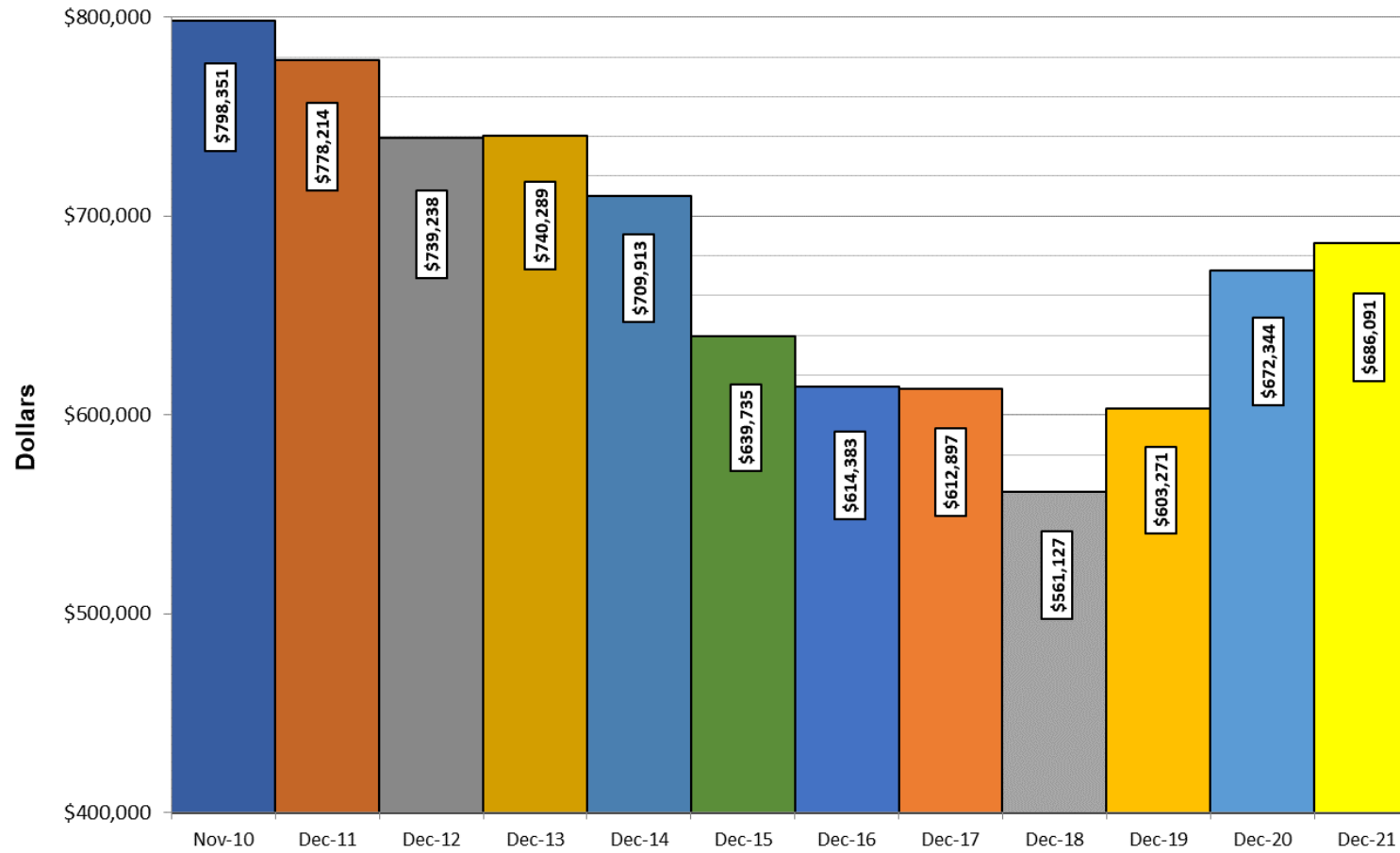
	(as of 11/30/2022)	(as of 11/30/2021)
Chase Bank Checking	\$3,161.28	\$19,607.34
Chase Bank Savings	6,123.45	6,122.85
Investments	<u>563,714.76</u>	<u>643,568.59</u>
Total Assets	\$ 572,999.49	\$ 669,298.77

Forum Finances over Time

November 2010 – December 2021



Forum Finances Over Time
November 2010 – December 2021



- 990 Filed and accepted by the IRS
- 2023 Budget being drafted
- Resource Development
 - “The Forum will diversify its revenue sources and increase over asset base by 10% in the next 2 years in order to sustain Forum activities and reduce deficit budgeting.”
 - Semi-Annual Appeal
 - Marketing Donate Button (Recognition, Memorials)
 - Grants
 - Include patient stories and utilize social media marketing



Final Thoughts

Q&A

- Advancing American Kidney Health
- Focus on enhancing social media presence
- Updates to MAC Toolkits and development of 3 new MAC Toolkits
- New KPAC Toolkits
- Actively pursuing additional financial resources to support Forum/Network activities
- Sharing Highly Effective Practices in the Kidney Community: consider submitting a best practice to the Forum's new community education resource

<https://esrdnetworks.org/education/sharing-best-practices-in-the-kidney-community>

Donate Online!



A screenshot of the esrdnetworks.org website. The browser address bar shows "https://esrdnetworks.org". The website header includes the logo, a search bar, and a "Log in" button. Below the header is a navigation menu with links for Home, About Us, Membership, Toolkits, Resources & News, Education, and Contact. The main content area features a map of the United States divided into 18 numbered regions, with a tooltip for "ESRD Networks - contact information" over region 14. To the right of the map is a green "Donate" button, which is circled in red. Below the button is a text block providing information about the organization's 501(c)(3) status and tax-deductible donations, followed by a "Donate now" button. Further down is a section titled "What's new on the Forum website?" with a link to "Learn about the new Transplant Toolkit for Patients" and a brief description of a 12-minute video.

Donate Button



The screenshot shows a web browser window with the URL <https://esrdnetworks.org/donate/>. The page header includes the organization's logo and the tagline "Advocating for the organizations that monitor the quality of chronic kidney disease, dialysis and kidney transplant care in the USA." A navigation menu contains links for Home, About Us, Membership, Toolkits, Resources & News, Education, and Contact. The main content area is titled "Donate to National Forum of ESRD Networks" and features a "Select an amount to donate" section with buttons for \$25, \$50, \$100, and "OTHER". The "OTHER" option is selected and circled in red. Below this, there are radio buttons for "Dedicate my donation in Honor or in Memory of someone", with "In honor of" selected. A text input field for "Person you're honoring/memorizing" is present. A "Message" text area and a "Notify someone of your donation" checkbox are also visible. A green "Continue" button is at the bottom of the form. To the right, a sidebar contains a "Donate" section with a "Donate now" button and a "What's new on the Forum website?" section.



Advocating for the organizations that monitor the quality of chronic kidney disease, dialysis and kidney transplant care in the USA.

Home About Us Membership Toolkits Resources & News Education **Donor Wall** Contact

- Thank You to all of our Generous Donors in 2021
- Thank You to all of our Generous Donors in 2022
- Donor Recognition Levels

Donor Wall

A gracious "Thank you" to all of our donors, big and small, are making a difference in the life of a kidney patient!

With more than 75 engaged volunteers actively involved in identifying gaps in care and filling those gaps, the Forum has developed both patient and provider centered resources. Through the generous donations from the community, we will continue this work. What is the community saying about these resources?

"Good info graphics and something for every staff member in the dialysis clinic." ~Corporate VP in Dialysis, about the Kidney Transplant Toolkit

"The information is geared to improving the health and safety of patients with ESRD." ~Dialysis Social Worker, about the Kidney Transplant Toolkit

"It gives a new way to look at things. We need to make sure we continue to meet patient needs." ~Dialysis Nurse, about the Transitions of Care Toolkit

Thank You to all of our Generous Donors in 2021

[Read more...](#)

Thank You to all of our Generous Donors in 2022

[Read more...](#)

Donor Recognition Levels

[Read more...](#)

esrdnetworks.org/donor-wall/

Donate

The National Forum of ESRD Networks, Inc. is a registered 501(c)(3) non-profit organization #13-3246354. Your donation is tax deductible to the extent allowable by law. No goods or services will be provided by the Forum in return or consideration for this contribution. Donations can also be mailed to the Forum Office at PO Box 203, Birchwood, WI 54817.

[Donate now](#)

What's new on the Forum website?

Learn about the new Transplant Toolkit for Patients

This 12-minute video provides an overview of the Toolkit

[Is A Kidney Transplant Right for Me?](#)

COVID-19 vaccination flyer for Dialysis patients

Please share this flyer with your dialysis patients

[Resources & Links for Kidney Patients](#)

The Forum is committed to supporting the activities of the ESRD Networks and improving care for all kidney patients.

We have a variety of free educational materials on our website and more under development.

We are a non-profit organization and do all this through volunteer members and limited financial resources.

Consider a donation today to support this work.

All donations are tax deductible.

Donate Here

<https://esrdnetworks.org/donate>

Forum of ESRD Networks
PO Box 70623
Henrico, VA 23255

Use the Chat feature on your Zoom panel to submit your questions.

All unanswered questions will be reviewed by our speakers; they will be summarized in a Q&A document which will be posted to the Forum website.



esrdnetworks.org



<https://facebook.com/esrdnetworks>



<https://twitter.com/ESRDNetworks> (tag us @esrdnetworks)



<https://www.linkedin.com/company/national-forum-of-esrd-networks-inc>



<https://www.youtube.com/channel/UC9Vp4Hfu7VmSTbSwG7-6e2g>

Sharing something about the KPAC? Use #KPACPatientVoice

Questions / Comments:
Kelly Brooks, Forum Coordinator
kbrooks@esrdnetworks.org
804-390-9822