



# *Forum Matters*

## Highlights & Updates

---

**Second Quarter 2022**

# What is the Forum?



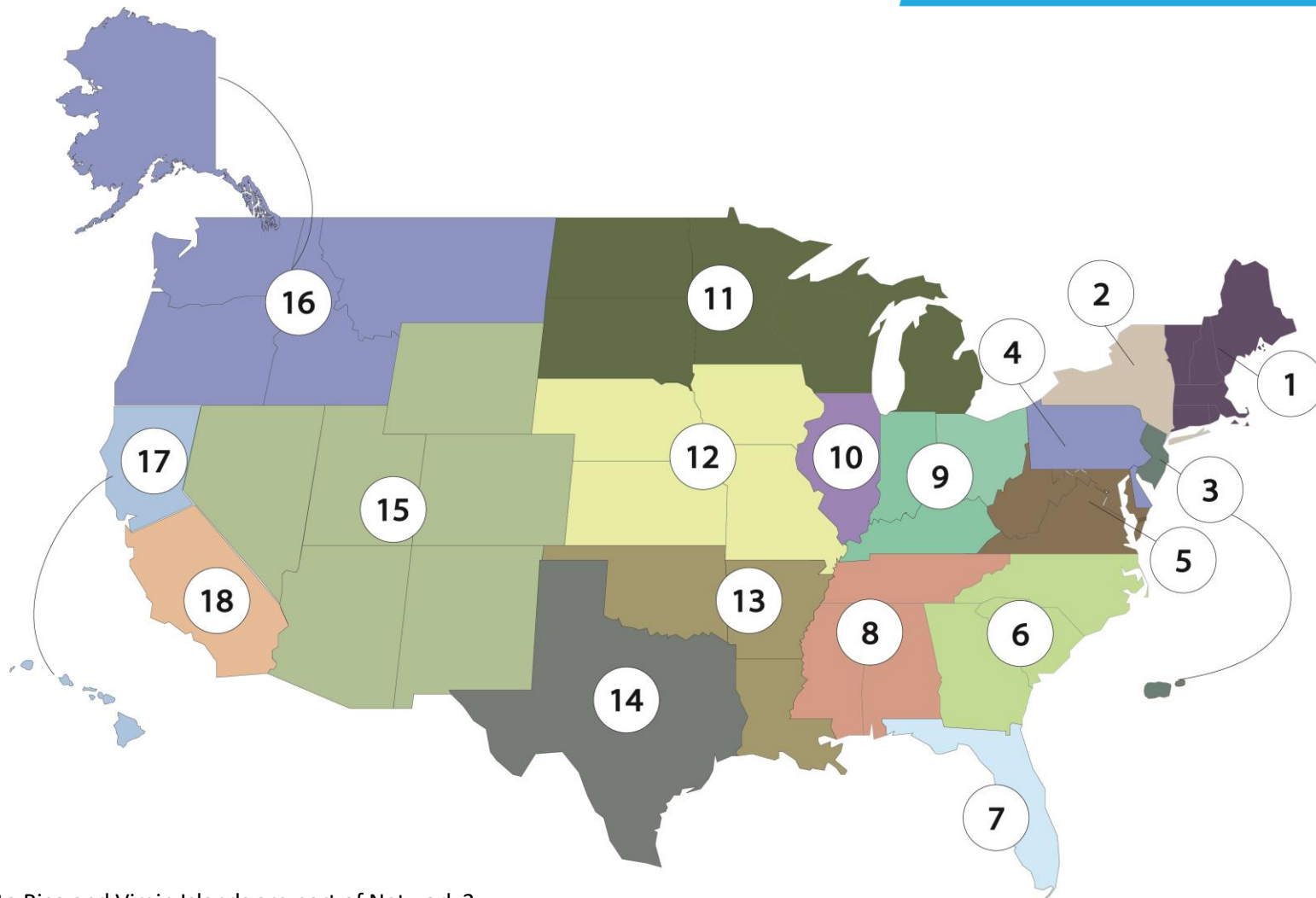
All ESRD Networks are members of the Forum of ESRD Networks, which is a not-for-profit organization that advocates on behalf of its membership and coordinates projects and activities of mutual interest to ESRD Networks. The Forum facilitates the flow of information and advances a national quality agenda with CMS and other renal organizations.

The **MISSION** of the Forum is to support and advocate on behalf of the ESRD Networks in promoting methods to improve the quality of care to patients with renal disease.

## CORE VALUES:

- Volunteerism
- Collaboration
- Innovation and Flexibility
- Spread of Knowledge
- Integrity
- Autonomy of Individual ESRD Networks
- Person (Patient & Family) Centeredness

# ESRD Networks



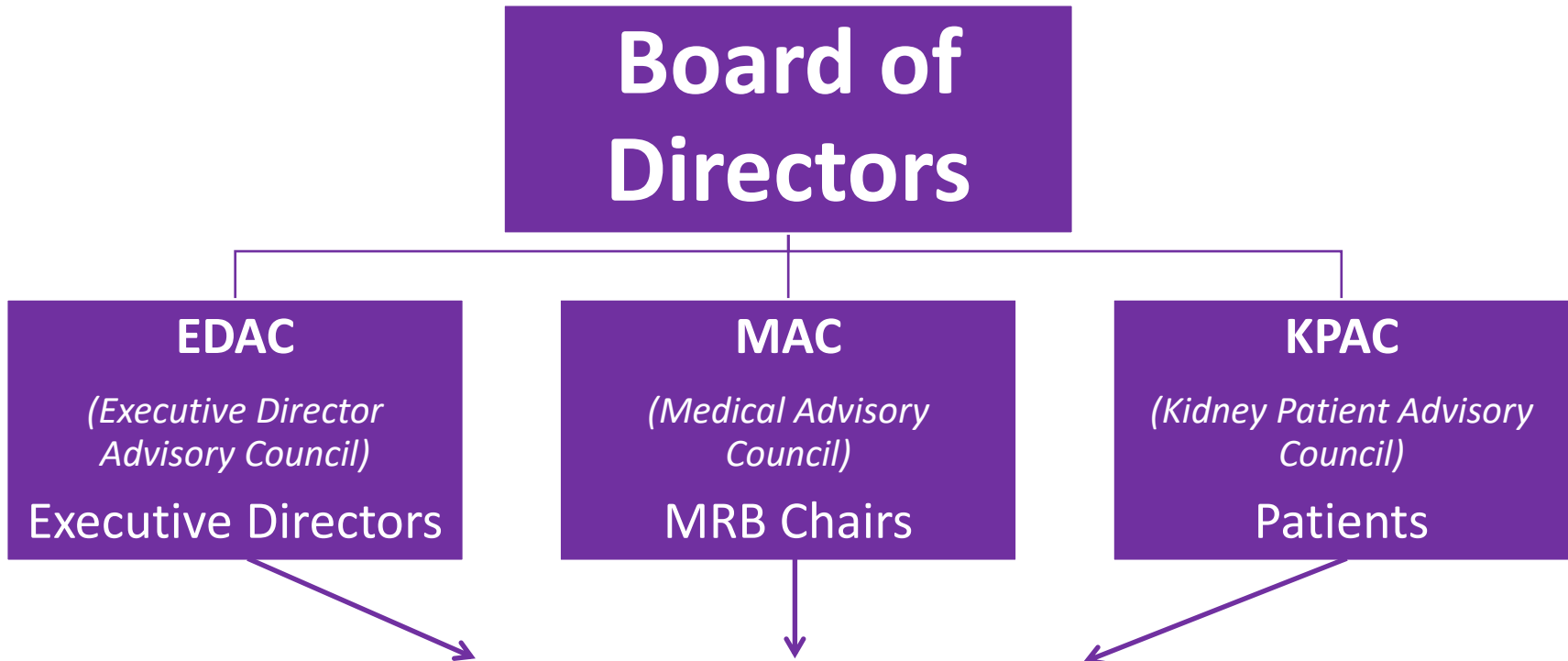
Puerto Rico and Virgin Islands are part of Network 3  
Hawaii, Guam, American Samoa are part of Network 17

# Strategic Planning Priorities: Framework for Forum Work



1. Increase Board Effectiveness and Commit to Board Development
  2. Resource Identification
  3. Commit to Customer Needs
  4. Explore and Strengthen Network/Forum Relationship with QIO/QIN Organizations & CMS
  5. Sharing Best Practices, Experiences, Innovation
  6. Marketing Forum Activities
  7. Framework for Alliance Building
- Workgroups to meet prior to September BOD meeting to evaluate goals and ensure priorities continue to align with the needs of the Forum and Networks and develop performance metrics.

# Forum Organizational Chart



- Assisting the Networks
- Council Activities: MAC, EDAC KPAC
- Regular Communication with CMS
- Quality Conference Webinars
- Facilitate flow of information between the Forum and Network Staff/BOD/MRB/PAC
- Relationships with other Stakeholders (i.e., RHA, RPA, LDOs, NKF, AAKP, AHQA, CDC, ASN)

# Forum Presidents



**Elbert P. Tuttle, Jr.**

(1976-1978)

**Robert J. Soberman**

(1978-1980)

**Frederick Westervelt**

(1980-1982)

**Dominick E. Gentile, MD**

(1982-1984)

**William W. Pfaff, MD**

(1984-1986)

**Sidney Baskin**

(1986-1989)

**John L. Bengfort, MD**

(1989-1992)

**John D. Bower, MD**

(1992-1994)

**Louis H. Diamond, MB, ChB, FACP**

(1994-1998)

**Jay B. Wish, MD**

(1998-2001)

**Alan S. Kliger, MD**

(2001-2004)

**Derrick L. Latos, MD, MACP**

(2004-2006)

**Richard S. Goldman, MD**

(2006-2009)

**Cynthia Kristensen, MD**

(2009-2011)

**Klemens Meyer, MD**

(2011-2012)

**Andrew D. Howard, MD, FACP**

(2012-2015)

**John Wagner, MD, MBA**

(2015-2017)

**Donald Molony, MD**

(2017- 2019)

**Ralph Atkinson III, MD**

(2019- 2021)

**David Henner, DO**

(2021 - Present)

# Forum Board of Directors

(As of 7/1/2022)



## **Executive Committee:**

President: David Henner, DO

President-Elect: Kam Kalantar-Zadeh, MD, MPH, PhD

Past President: Ralph Atkinson III, MD

Treasurer: Stephanie Hutchinson, MBA

Secretary: Chris Brown

MAC Chair: Dan Landry, DO, FASN

EDAC Chair: Vicky Cash, MBA, BSN, RN

EDAC Vice-Chair: Mary Albin, BS, CPHQ

KPAC Co-Chair: Derek Forfang

KPAC Co-Chair: Dawn Edwards

## **Members-at-Large:**

Christine Logar, MD, FASN

Kelly M. Mayo, MS

Keith Norris, MD PhD

Stephen Pastan, MD

Maria Regnier, MSN, RN, CNN

Preethi Yerram, MD, MS, FASN

## **Ad Hoc:**

Andrew Howard, MD, FACP

Donald Molony, MD

John Wagner, MD, MBA

## **Emeritus:**

Louis Diamond, MB, ChB, FACP, FCP (SA)

# Executive Director Advisory Council (As of 7/1/2022)



<b>Chair:</b>	Vicky Cash, MBA, BSN, RN
<b>Vice-Chair:</b>	Mary Albin, BS, CPHQ
Networks 1/2	Sue Caponi, MBA, RN, BSN, CPHQ
Networks 3/4	Chris Brown
Network 5	Brandy Vinson
Network 6	Danielle Daley, MBA
Networks 7/13/15/17/18	Helen Rose, MSW, BSW, LCSW
Networks 8/14	Mary Albin, BS, CPHQ
Network 9	Victoria L. Cash, MBA, BSN, RN
Network 10	Audrey Broaddus
Network 11	Dee LeDuc
Network 12	Stephanie L. Smith
Network 16	Stephanie Hutchinson, MBA



# Medical Advisory Council

(as of 7/1/2022)



**Chair:** Daniel L. Landry, DO, FASN

**Immediate Past Chair:** Kam Kalantar-Zadeh, MD, MPH, PhD

Network 1: Daniel L. Landry, DO, FASN  
Network 2: George Coritsidis, MD  
Network 3: Keith Norris, MD, PhD  
Network 4: Paul Palevsky, MD  
Network 5: Marc Brazie, MD  
Network 6: John J. Doran, MD, FASN  
Network 7: Debra Hain, PhD, APRN, AGPCNP-BC  
Network 8: Mandeep Grewal, MD, MBA  
Network 9: Anne Huml, MD, MS  
Network 10: Andres Serrano, MD  
Network 11: Louis Raymond, MD  
Network 12: Preethi Yerram, MD

Network 13: Laura Rankin, MD  
Network 14: Donald Molony, MD  
Network 15: Harmeet Singh, MD  
Network 16: John Stivelman, MD  
Network 16 Alt: Christine Logar, MD  
Network 17: Ramin Sam, MD  
Network 18: Kam Kalantar-Zadeh, MD  
Ad Hoc Member: Stephen Pastan, MD  
EDAC Rep: Mary Albin, BS, CPHQ (8/14)  
QID Rep: Barbara Dommert-Breckler, RN, BSN, CNN (16)  
KPAC Rep: Derek Forfang (17)

# Kidney Patient Advisory Council

(as of 7/1/2022)



Network 1: Jerry Calabritto

Network 2: Stephanie Dixon

Dawn Edwards (**Co-Chair**)

Network 3: Bill Senior

Maria Casas

Network 4: Timmy Nelson

Network 5: Virna Elly

Patrick Gee

Network 6: Dolores McGrath

Network 7: Janice Starling

Network 8: Jacqueline Bland

Terry Peeler

Network 9: Evan Coaker

Network 10: Della Major

Quin Taylor

Network 11: Jeff Nelson

Patricia Bologna

Mary Baliker

Network 12: Shane Blanchard

Network 13:

Network 14: Precious McCowan

Dawn Goertz

Network 15: Lynne Hall

Network 16: Lisa Custer

Network 17: Derek Forfang (**Co-Chair**)

Doris Lew

Network 18: Terry McCallum

EDAC Rep: Dee LeDuc (NW 11)

PSD Reps: Yessi Cubillo (NW 3)

Lisa Hall, MSSW, LICSW (NW 16)

# Forum Leadership Calls & Meetings



## **Forum Executive Committee:**

- Monthly conference calls

## **Forum Board of Directors:**

- Quarterly conference calls
- 2022 Meetings: March 9 & 11 (virtual), September 9-10 (Chicago)

## **CMS/Forum Leadership Calls**

- Conference calls
- In-Person Meeting at CMS Quality Conference *(2020, no in-person meeting in 2021 or 2022)*

## **CMS/Network/Forum COVID-19 Calls**

- Weekly calls began April 2020, transitioned to monthly in November 2020, ended May 2021, monthly calls resumed August 2021, bi-monthly calls began February 2022

## **MAC**

- Quarterly conference calls
- Annual MAC Meeting: November 2, 2022 (Orlando)

## **EDAC**

- Monthly conference calls
- Meeting with CMS & Division of Kidney Health/iQIIG Leaders
- Periodic calls with FMC, DaVita, DCI, RHA

## **KPAC**

- Monthly conference calls

- Reviewed strategic priorities in preparation for workgroups to reconvene to evaluate goals and establish performance metrics
- Forum investments and donations continue to be a funding source for the organization. Strong financials through 2022.
- Forum received \$5000 grant through PCORI to support the dissemination of Evidence Updates related to treating depression in patients with kidney disease. The Forum has proposed 3 activities to help promote the PCORI Evidence Updates:
  1. Patient-perspective piece summarizing KPAC members' participation in study and their experiences related to mental health and kidney disease.
  2. Podcast on the topic of mental health in dialysis patients to bring awareness to the topic and offer resources for patients, including the PCORI Evidence Updates and the KPAC Depression Toolkit.
  3. Partnering with the ESRD Networks, the KPAC will host a community webinar on the topic of mental health in dialysis patients, annual depression screening, and treatment options.

## **Updates from EDAC Leadership:**

- Networks shared Base Year outcomes where data were available, as well as Option Year 1 details
- Focus on health equity across Statement of Work

### Updates from KPAC Leadership:

- Work continues on the Health Equity Toolkit
- Members contributed a patient-perspective chapter to the MAC Home Dialysis Toolkit, along with a supplemental video
- KPAC reps spoke at 2022 conferences including the KDIGO conference in Berlin and the NKF Spring Clinicals in Boston
- KPAC reps serve on the TAQIL ETCLC committee, sharing the KPAC perspective
- KPAC reps serve on 3 CMS TEPs:
  - Quality Measure Development Plan & Quality Measure Index
  - Dialysis Facility Quality of Patient Care Star Ratings
  - Impact Assessment Report 2024 of CMS Quality and Efficiency Measures
- KPAC reps to serve on advisory committee/focus groups for proposed PCORI grant project looking at shared decision-making and medical management without dialysis
- KPAC reps to serve on advisory board for NIH grant (geriatric care model for dialysis patients)

### Updates from MAC Leadership:

- Dan Landry, DO, FASN, elected Chair of the MAC with 2-year term beginning July 1, 2022
- Updated the Home Dialysis Toolkit with input from the KPAC
- Three proposed new toolkits:
  - CKD Care Planning & Measures
  - Conservative Management & Supportive Care
  - Practicing Health Equity (in conjunction with Forum KPAC)
- Sharing Highly Effective Practices page was launched on website
  - Three submissions approved to date
    - Monthly Chairsides IDT Meetings
    - COVID-19 Communication Between SNF/PCH & Dialysis Facilities
    - Second Chance: A 90-Day Trial Basis Program
  - Developed merit review by which to evaluate proposals
- MAC Annual Meeting: November 2, 2022, in Orlando, FL

## Professional Toolkits

- Inpatient Medical Director Toolkit
- Kidney Transplant Toolkit
- Transitions of Care Toolkit (recently updated)
- Vaccination Toolkit (recently updated)
- Outpatient Medical Director Toolkit (recently updated)
- Home Dialysis Toolkit (update in progress)
- Catheter Reduction Toolkit
- QAPI Toolkit

## Patient Toolkits:

- Health Equity Toolkit (in progress)
- Dialysis Patient Depression Toolkit
- Dialysis Patient Grievance Toolkit
- Financial Help Resources
- Kidney Patient Transplant Toolkit
  - *Video available for patients providing an overview of the Transplant Toolkit; consider sharing with your patients!*



MAC Toolkit	Updates
Home Dialysis Toolkit	<ul style="list-style-type: none"> <li>• New sections to address AAKH and Conditions for Coverage updates</li> <li>• Emergency management of home dialysis patients</li> <li>• Impact of ESCOs, ETC Model, Voluntary Models on home therapies</li> <li>• Enhanced modality education: transitional care and hands-on experience care options</li> <li>• Emerging technology and the impact and benefits to home therapies</li> <li>• Addressing disparities and access to care</li> <li>• Home therapy options in the LTC/nursing home setting</li> <li>• KPAC Section: Empowering patients and care partners to be successful at home</li> </ul>
Outpatient Medical Director Toolkit	<ul style="list-style-type: none"> <li>• Emergency preparedness (Henner)</li> <li>• COVID (Kalantar)</li> <li>• Leadership (Molony)</li> </ul>
Transitions of Care Toolkit	<ul style="list-style-type: none"> <li>• Nursing home communication tool</li> <li>• COVID</li> <li>• Medication reconciliation</li> <li>• Add flu and COVID vaccine information to the transfer summary forms in the toolkit</li> </ul>
Vaccination Toolkit	<ul style="list-style-type: none"> <li>• COVID Vaccination</li> <li>• Vaccination tracking tool now includes COVID vaccine and pneumococcal booster + age so facilities can track patients &gt;64 YO for PPSV-23 booster</li> </ul>

## Regularly scheduled calls to discuss programmatic/strategic issues:

- **Anita Monteiro**, Director, iQuality Improvement & Innovation Group (iQIIG)
- **Shane Illies**, Deputy Director, iQIIG
- **Paul McGann**, MD, CMS Chief Medical Officer for Quality Improvement
- **Shalon Quinn**, Director, Division of Kidney Health, iQIIG
- **Melissa Dorsey**, Deputy Director, DKH, iQIIG
- **Mitzi Christ**, Regional Program Manager, Div of Kidney Health, iQIIG
- CORs, ARAs, Central Office staff

**Calls in 2022: 1/10, 2/14, 4/25, 6/13**

**CMS Org Chart:**

[https://www.cms.gov/About-CMS/Agency-Information/CMSLeadership/Office\\_CCSQ.html](https://www.cms.gov/About-CMS/Agency-Information/CMSLeadership/Office_CCSQ.html)

# CMS Organizational Chart



**Chiquita Brooks-LaSure,**  
Administrator, CMS

**Liz Fowler**  
Director, Center for  
Medicare and Medicaid  
Innovation

## iQuality Improvement & Innovation Group

Anita Monteiro, Director  
Shane Illies, Act. Dep. Dir.  
Paul McGann, MD, CMS Chief Medical Officer for Quality  
Improvement

### Div of Community & Population Health

Traci Archibald, Dir  
Sophia Autrey, Dep. Dir  
Craig Bagley, Acting Regional Program Mgr  
(Permanent RPM – Shalon Quinn)

### Div of Beneficiary Review & Care Mgmt

Steven Rubio, Dir.  
Confidence Gbarayor-Hyde, Dep. Dir.  
Trevor Stone, Acting Regional Program Mgr.

### Div of Strategic Innovation, Evaluation & Communication

Renee Dupee, Dir  
(vacant), Dep. Dir.  
(vacant), Regional Program Mgr

### Div of Quality Improvement Innovation Models Testing

Jade Perdue, Dir.  
Brenda Gentles, Dep Dir.

### Div of Transforming Clinical Practices

Rob Flemming, Dir  
Shawan Johnson, Dep. Dir

### Division of Kidney Health

Shalon Quinn, Dir  
Melissa Dorsey, Dep Dir  
Mitzi Christ, Regional Program Mgr

- Bridget Pfaff and Megan Meller from Gunderson Health presented findings and lessons learned from their study “SARS-CoV-2 in ESRD Facilities: Infection Control and Immunization.”
- Forum leadership continued to bring COVID priorities and concerns to CMS during monthly CMS/Forum leadership calls. Forum leaders provided updates on:
  - Rates of COVID testing for kidney patients
  - COVID positivity rates among kidney patients
  - Vaccination rates among kidney patients and dialysis staff
  - Kidney transplant and waitlist rates
  - Network observations on COVID-related technical assistance
  - Kidney patient observations
  - **Dialysis supply & staffing shortages**

Minutes, recordings, resources: <https://esrdnetworks.org/resources-news/covid-19-information-resources/>

# Forum Members in the Community



- Dan Landry, DO, NKF New England Excellence in Nephrology Award 2022 (April)
- T. Nelson. New Hope, New Health: Charting a Path Forward from a Patient Perspective. CMS Quality Conference, Virtual (April)
- D. Henner. [Transitional Care Units](#). NKF Spring Clinicals, Boston, MA (April)
- P. Gee, V. Elly. Patient Engagement and Kidney Care. NKF Spring Clinicals, Boston, MA (April)
- P. Gee, V. Elly, L. Custer. Health Equity Listening and Learning Panel. NKF Spring Clinicals, Boston, MA (April)
- D. Edwards. Debunking Common Myths about Patient Eligibility for Home Dialysis. NKF Spring Clinicals, Boston, MA (April)
- K. Kalantar-Zadeh et al. e-Poster. Palliative Care Utilization Among Advanced CKD Patients Treated with Conservative Management vs. Dialysis. NKF Spring Clinicals, Boston, MA (April)
- K. Kalantar-Zadeh et al. e-Poster. Racial Disparities in Involuntary Discharges from Dialysis Facilities and Related Patient-Reported Grievances throughout the Nation: Data from 24,718 Affected Dialysis Patients during 2017-2020. NKF Spring Clinicals, Boston, MA (April)
- D. Edwards. Symptom-Based Complications in Dialysis. KDIGO Controversies Conference, Berlin, Germany (April)
- M. Baliker. Challenges in Management of the Kidney Allograft: From Decline to Failure. KDIGO Controversies Conference, Berlin, Germany (April)
- D. Henner. Creating Partnerships: The Role of the Medical Director in the Dialysis Facility. Renal Healthcare Association Dialysis Facility Operations 101 Back to Basics, Virtual (May)
- M. Baliker. Kidney Transplant: Navigating the Waitlist (Panel). American Kidney Fund Kidney Action Week. (June)
- M. Baliker. Organ and Tissue Donation: A Heroic Decision. University of Wisconsin LaCrosse Alumni. (June)

- Advancing American Kidney Health
- Strategic Priorities, developed in 2018, are under review to ensure they remain relevant and align with and support the activities of the new Network SOW
- Updates to MAC Toolkits
- New KPAC Toolkits
- Actively pursuing additional financial resources to support Forum/Network activities
- Sharing Highly Effective Practices in the Kidney Community; consider submitting a best practice to the Forum's new community education resource. Available at:  
<https://esrdnetworks.org/education/sharing-highly-effective-practices-in-the-kidney-community/>



Followers:

Feb 2020 = 134

Sep 2021 = 288

**June 2022 = 256**



Followers:

Feb 2020 = 95

Sep 2021 = 242

**June 2022 = 323**



Followers:

May 2021 = 6

Sep 2021 = 9

**June 2022 = 11**

- Transplant Video views = 121
- “Thank You” Videos views = 170

# Forum Website Updates



Home | [https://esrdnetworks.org](#) | Log in | Search

## THE NATIONAL FORUM OF ESRD NETWORKS

Advocating for the organizations that monitor the quality of chronic kidney disease, dialysis and kidney transplant care in the USA.

Home | About Us | Membership | Toolkits | Resources & News | Education | Contact

ESRD Networks - contact information

Welcome to the Forum of ESRD Networks website

### Donate

The National Forum of ESRD Networks, Inc. is a registered 501(c)(3) non-profit organization #13-3246354. Your donation is tax deductible to the extent allowable by law. No goods or services will be provided by the Forum in return or consideration for this contribution. Donations can also be mailed to the Forum Office at PO Box 203, Birchwood, WI 54817.

Donate now

### What's new on the Forum website?

Learn about the new Transplant Toolkit for Patients

This 12-minute video provides an overview of the Toolkit

[Is A Kidney Transplant Right for Me?](#)



# Donate Button



Advocating for the organizations that monitor the quality of chronic kidney disease, dialysis and kidney transplant care in the USA.

## Donate to National Forum of ESRD Networks

### Select an amount to donate

\$25

\$50

\$100

OTHER

Dedicate my donation in **Honor** or in **Memory** of someone

In honor of

In memory of

Person you're honoring/memorializing

Message

Notify someone of your donation.

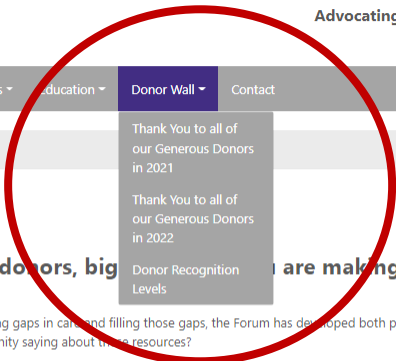
Continue

## Donate

The National Forum of ESRD Networks, Inc. is a registered 501(c)(3) non-profit organization #13-3246354. Your donation is tax deductible to the extent allowable by law. No goods or services will be provided by the Forum in return or consideration for this contribution. Donations can also be mailed to the Forum Office at PO Box 203, Birchwood, WI 54817.

Donate now

## What's new on the Forum website?



## Donor Wall

### A gracious "Thank you" to all of our donors, big and small, are making a difference in the life of a kidney patient!

With more than 75 engaged volunteers actively involved in identifying gaps in care and filling those gaps, the Forum has developed both patient and provider centered resources. Through the generous donations from the community, we will continue this work. What is the community saying about these resources?

- "Good info graphics and something for every staff member in the dialysis clinic." ~Corporate VP in Dialysis, about the Kidney Transplant Toolkit
- "The information is geared to improving the health and safety of patients with ESRD." ~Dialysis Social Worker, about the Kidney Transplant Toolkit
- "It gives a new way to look at things. We need to make sure we continue to meet patient needs." ~Dialysis Nurse, about the Transitions of Care Toolkit

#### Thank You to all of our Generous Donors in 2021

[Read more...](#)

#### Thank You to all of our Generous Donors in 2022

[Read more...](#)

#### Donor Recognition Levels

[Read more...](#)

### Donate

The National Forum of ESRD Networks, Inc. is a registered 501(c)(3) non-profit organization #13-3246354. Your donation is tax deductible to the extent allowable by law. No goods or services will be provided by the Forum in return or consideration for this contribution. Donations can also be mailed to the Forum Office at PO Box 203, Birchwood, WI 54817.

[Donate now](#)

### What's new on the Forum website?

#### Learn about the new Transplant Toolkit for Patients

This 12-minute video provides an overview of the Toolkit

[Is A Kidney Transplant Right for Me?](#)

#### COVID-19 vaccination flyer for Dialysis patients

Please share this flyer with your dialysis patients

[Resources & Links for Kidney Patients](#)

The Forum is committed to supporting the activities of the ESRD Networks and improving care for all kidney patients.

We have a variety of free educational materials on our website and more under development.

We are a non-profit organization and do all this through volunteer members and limited financial resources.

Consider a donation today to support this work.

All donations are tax deductible.

## Donate Here

<https://esrdnetworks.org/donate>

Forum of ESRD Networks  
PO Box 70623  
Henrico, VA 23255

# Forum Media



<http://esrdnetworks.org>



<https://facebook.com/esrdnetworks>



<https://twitter.com/ESRDNetworks> (tag us @esrdnetworks)



<https://www.youtube.com/channel/UC9Vp4Hfu7VmSTbSwG7-6e2g>

*Sharing something about the KPAC? Use #KPACPatientVoice*

Questions / Comments:

Kelly Brooks, Forum Coordinator

[kbrooks@esrdnetworks.org](mailto:kbrooks@esrdnetworks.org)

804-390-9822